

BOE

京东方智慧显示产品手册

BOE Smart Display Product Manual

用心改变生活

Change life with heart



北京京东方多媒体科技有限公司
Beijing BOE Multimedia Technology CO.,Ltd

智慧显示事业部
Smart Display BU

www.boe.com

地址：北京亦庄经济技术开发区西环中路12号 100176
Address: NO.12XihuanzhongRD,BDA,Beijing,100176,P.R.China

Tel : +86-10-60964257 (销售) (Sale)
+86-10-60964237 (技术) (Technology)

Email : sdbu@boe.com.cn

北京京东方多媒体科技有限公司
Beijing BOE Multimedia Technology CO.,Ltd

京东方科技集团股份有限公司(BOE)创立于1993年4月,是一家物联网技术、产品与服务提供商。核心事业包括显示器件、智慧系统和健康服务。产品广泛应用于手机、平板电脑、笔记本电脑、显示器、电视、车载、数字信息显示、健康医疗、金融应用、可穿戴设备等领域。

2016年,BOE(京东方)新增专利申请量7570件,其中发明专利超80%,累计可使用专利数量超过5万件,位居全球业内前列。美国商业专利数据显示,BOE(京东方)进入2016年度美国专利授权量TOP40,年增长率超200%。全球创新活动的领先指标—汤森路透《2016全球创新报告》显示,BOE(京东方)已跻身半导体领域全球第二大创新公司。

截至2016年四季度,BOE(京东方)全球市场占有率持续提升:智能手机液晶显示屏、平板电脑显示屏、笔记本电脑显示屏市占率全球第一,显示器显示屏提升至全球第二,电视液晶显示屏保持全球第三。

目前,BOE(京东方)拥有11条半导体显示生产线(其中4条在建),包括北京第5代和第8.5代TFT-LCD生产线、成都第4.5代TFT-LCD生产线、合肥第6代TFT-LCD生产线和第8.5代TFT-LCD生产线、鄂尔多斯第5.5代LTPS/AMOLED生产线,以及重庆第8.5代TFT-LCD生产线等7条运营生产线,还有在建中的全球最高世代线——合肥第10.5代TFT-LCD生产线、成都第6代柔性AMOLED生产线、福州第8.5代TFT-LCD生产线以及绵阳第6代柔性AMOLED生产线。

BOE(京东方)在内蒙古鄂尔多斯、重庆、河北固安、江苏苏州、福建厦门等地也拥有多个制造基地,营销和服务体系覆盖欧、美、亚等全球主要地区。

BOE Technology Group Co., Ltd., founded in April 1993, is a supplier of internet of things technologies, products and services. BOE's three core businesses are Display Device, Smart System and Healthcare Service. BOE's products are widely used in a broad spectrum of applications such as mobile phone, tablet, notebook, monitor, TV, vehicle display, digital information display, healthcare, finance and wearable devices.

BOE sticks to the innovation concept of "Technology Leadership, First-global-launch Products, Value Co-creation". BOE's First-global-launch products coverage exceeds 39%, and its yearly new-patent applications amounted to 6156 in 2015. BOE has over 40000 usable patents, ranking No.1 globally in the industry. BOE ranks No.1 in terms of market share of panels for mobile phone and tablet.

At present, BOE has 7 production lines in operation, including a Gen 5 TFT-LCD line and a Gen 8.5 TFT-LCD line in Beijing, a Gen 4.5 TFT-LCD line in Chengdu, a Gen 6 TFT-LCD line and a Gen 8.5 TFT-LCD line in Hefei, a Gen 5.5 AMOLED line in Ordos, and a Gen 8.5 TFT-LCD line in Chongqing. There is another Gen 6 AMOLED line in Chengdu, a Gen 8.5 TFT-LCD line under construction in Fuzhou and the world's highest generation line in Hefei Gen 10.5 TFT-LCD line under construction.

BOE has manufacturing bases located in Beijing, Chongqing, Chengdu of Sichuan Province, Hefei of Anhui Province, Ordos of Inner Mongolia Autonomous Region, Gu'an of Hebei Province, Suzhou of Jiangsu Province and Xiamen of Fujian Province. BOE also boasts a global marketing and service network, which covers the world's major areas including Europe, America and Asia.



产品特性 Product Features	01
-----------------------	----

产品介绍 Product Introduction	03
---------------------------	----

高端显示 High-end Displays	
------------------------	--

110" 4K/8K智能显示终端 110 inch 4K/8K Intelligent Display Terminal	05
---	----

98" 4K/8K智能显示终端 98 inch 4K/8K Intelligent Display Terminal	07
---	----

拼接显示 Splicing Displays	
------------------------	--

46"、55" 高/低亮度拼接显示单元 46 inch、55 inch High/Low Brightness Video Wall	09
---	----

交互显示 Interaction Displays	
---------------------------	--

65" 4K OGS触控一体机 65 inch 4K OGS IWB	11
---------------------------------------	----

55"、65"、70"、86"、98" 智能交互一体机 55 inch、65 inch、70 inch 86 inch and 98 inch" IR IWB	13
--	----

解决方案 Solution	
---------------	--

智慧医疗 Smart Medical	15
-----------------------	----

云桌面 Cloud Desktop	17
----------------------	----

多媒体发布系统 Intelligent Conference System	19
--	----

智能会议系统 Multimedia Information Release System	20
---	----

电子货架标签 Electronic Shelf Label System	21
---	----

创意显示 Innovative Displays	
--------------------------	--

iGallery数字艺术馆 iGallery Digital Art Gallery	23
---	----

数字标牌 Digital Signage	25
-------------------------	----

条形显示产品 LCD Bar Display	26
---------------------------	----

透明显示产品 Transparent Display	27
-------------------------------	----

工业级监视器 Industrial Monitor	28
------------------------------	----

显示器 Monitor	29
----------------	----

技术参数 Technical Specifications	31
-------------------------------	----

项目案例 Project Case	37
-------------------	----

产品特性

PRODUCT FEATURES

硬屏+ ADSDS Panel



Normal



ADSDS

ADSDS专利硬屏技术，可视角度大、响应速度快
色彩还原度高，手压无水波纹变形

ADSDS patented technology, with wide viewing angle and fast response high color revivification degree, no ripple distortion under pressure

超高速运动画面处理 UHS Moving Picture Processing



其他
Other

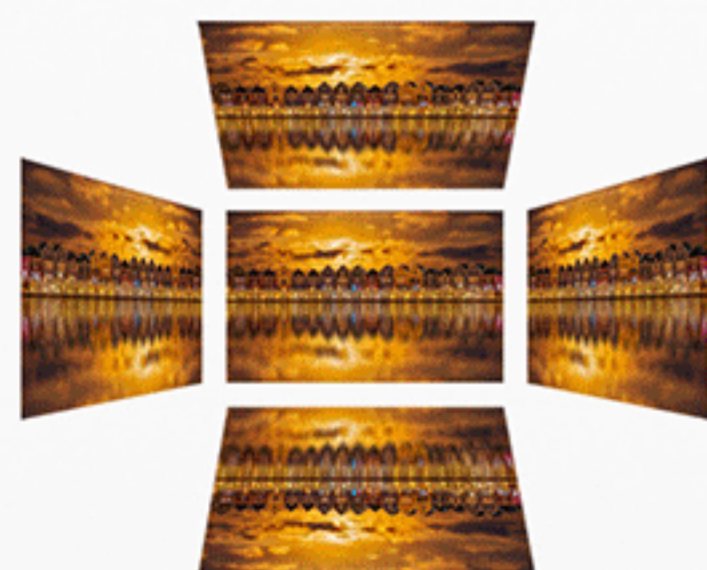


BOE

智能芯片处理方案，动态画面显示更流畅，无拖尾、卡顿，带来前所未有的流畅体验

With the smart chip solution, dynamic picture is more smooth without tail and lag, bringing fluent experience

超宽视角 Super-wide Viewing Angle



178°超宽视角，满足最大范围内的观看需求
178° super-wide viewing angle, meet viewing demand in maximum range

智能控光技术 Smart Dimming Technology



日光
Sunlight



夜光
Luminous

随环境光的变化智能调节屏幕亮度，给予用户最舒适的观看体验

The screen brightness can be adjusted adaptive to change of the ambient light, to give the user the most comfortable viewing experience

区域控光技术 Local Dimming Technology



其他
Other



BOE

智能调节图像亮度，优化亮场凸显暗场，展现完美细节

Intelligent optimization adjustment of image brightness, enhance color contrast and show every detail

图像降噪技术 Image Denoising Technology



其他
Other



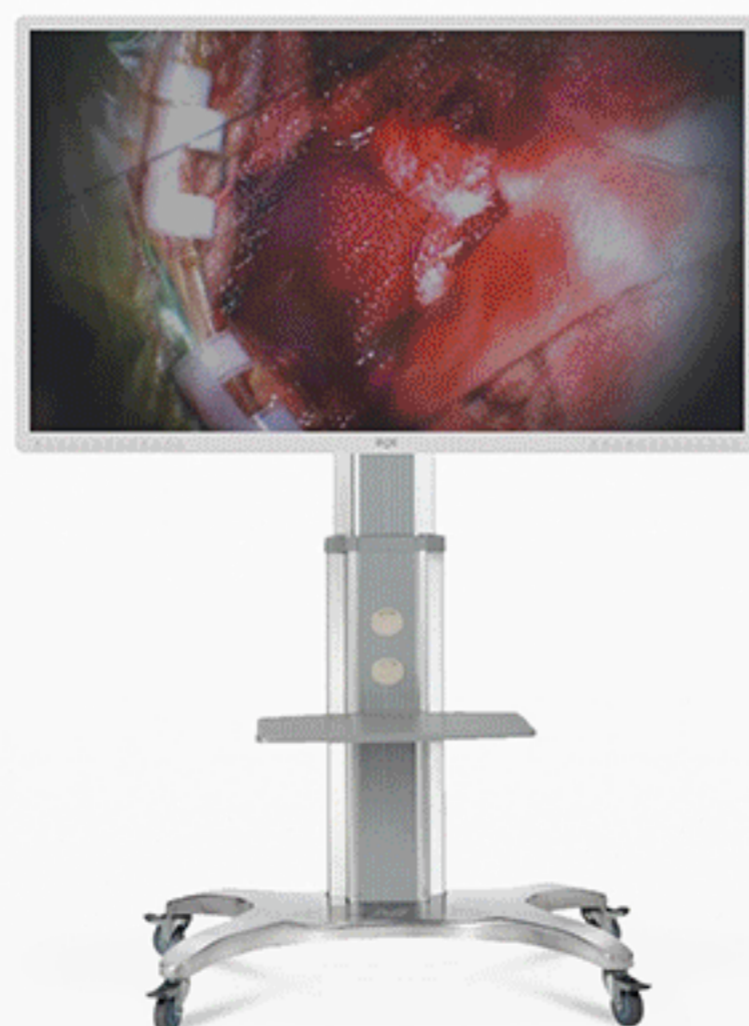
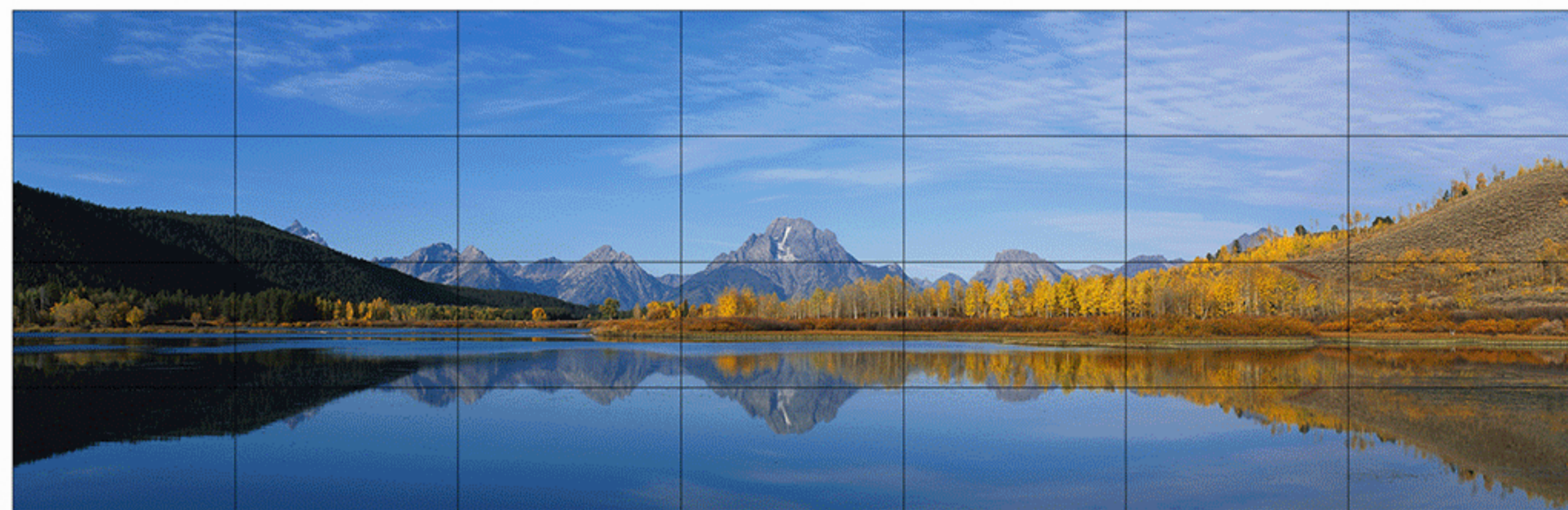
BOE

有效减少信号传输过程中产生的噪声，还原信号品质

Effectively reduce the noise generated during the signal transmission and reappear the original signal

产品介绍 PRODUCT INTRODUCTION

- 高端显示 High-end Displays
- 拼接显示 Splicing Displays
- 交互显示 Interaction Displays
- 解决方案 Solution
- 创意显示 Innovative Displays





110" 4K/8K智能显示终端

110 inch 4K/8K Intelligent Display Terminal

超大尺寸，巅峰之作，精湛工艺，震撼体验

A super-large masterpiece with excellent craftsmanship and providing amazing experience

4K/8K超高清显示，清晰流畅，立体逼真画面
ADSDS超级硬屏技术，超宽视角，超高色彩表现力
简约稳重的设计风格，轻盈时尚，外观精美
极简式UI设计，界面唯美，无冗余操作
高品质音响效果，多层次音域表现
震撼音感风暴来袭

4K/8K UHD display shows clear, smooth and vivid pictures; ADSDS technology, super-wide viewing angle; ultra-high color expressiveness. Simple and sober design style contributes to its light, fashionable and good-looking features. Minimalist UI design makes for aesthetic interfaces and eliminates redundant operations. Excellent sound effects and multi-level expressions across various ranges bring an auditory tour de force.



产品特性：

Product features

- | | | |
|-----------|---------|---------------------------------|
| 图像降噪技术 | 智能音量技术 | Image Denoising Technology |
| 智能控光技术 | 全网浏览器 | Smart Dimming Technology |
| 区域控光技术 | BOE软件商城 | Local Dimming Technology |
| 硬屏+ | 无线智能共享 | ADSDS Panel |
| 超宽视角 | 高透过率 | Super-wide Viewing Angle |
| 超高速运动画面处理 | | UHS Moving Picture Processing |
| | | Smart Volume Control Technology |
| | | Web Browser |
| | | BOE App Store |
| | | Smart WiFi Hotspot |
| | | High Transmittance |

应用场所：

Applications

会议室、展馆、展厅、监控室等场所
Conference room, exhibition hall, monitoring room and so on

技术参数P31
Technical Parameters P31



98" 4K/8K智能显示终端

98 inch 4K/8K Intelligent Display Terminal

"全球最清晰液晶显示"，超高分辨率，至清至真
"Globally clearest LCD" featuring ultra-high resolution

4K/8K 超高清显示，分辨率为FHD的8/16倍
 画面细节尽收眼底，超高色彩表现力
 ADSDS超级硬屏技术，超宽视角
 简约稳重的设计风格，轻盈时尚，外观精美
 极简式UI设计，界面唯美，无冗余操作
 高品质音响效果，多层次音域表现
 震撼音感风暴来袭



4K/8K ultra high definition display with a resolution 8/16 times of FHD allows you to have a panoramic view of every detail of each picture; ADSDS technology; super-wide viewing angle; ultra-high color expressiveness. Simple and sober design style contributes to its light, fashionable and good-looking features. Minimalist UI design makes for aesthetic interfaces and eliminates redundant operations. Excellent sound effects and multi-level expressions across various ranges bring an auditory tour de force.

产品特性：

Product features

- | | | |
|-----------|---------|---------------------------------|
| 图像降噪技术 | 智能音量技术 | Image Denoising Technology |
| 智能控光技术 | 全网浏览器 | Smart Dimming Technology |
| 区域控光技术 | BOE软件商城 | Local Dimming Technology |
| 硬屏+ | 无线智能共享 | ADSDS Panel |
| 超宽视角 | 高透过率 | Super-wide Viewing Angle |
| 超高速运动画面处理 | | UHS Moving Picture Processing |
| | | Smart Volume Control Technology |
| | | Web Browser |
| | | BOE App Store |
| | | Smart WiFi Hotspot |
| | | High Transmittance |

应用场所：

Applications

会议室、展馆、展厅、监控室等场所
 Conference room, exhibition hall, monitoring room and so on

技术参数P32
 Technical Parameters P32

拼接显示 46" 55" 高/低亮度拼接显示单元

Splicing Displays 46 inch、55 inch High/Low Brightness Splicing Display Unit

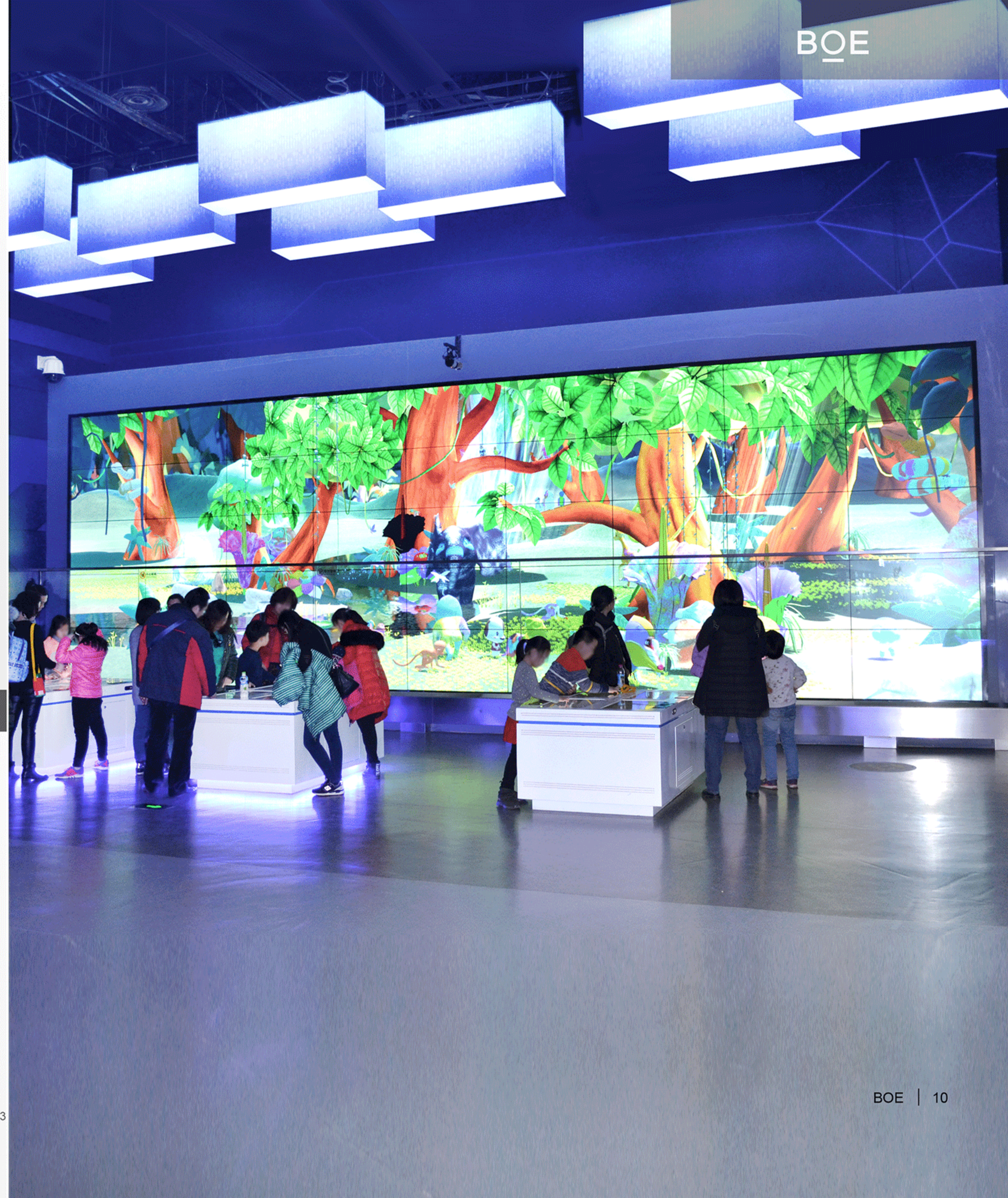
极致窄边，无限拼接，优秀品质，完美体验

Ultra-narrow bezel, seamless splicing and excellent quality give you perfect experience



- 超窄边框：极致拼缝，巨幕观看新体验
- 定制拼接：易拼矩阵控制，屏幕自由组合
- 无忧分屏：自动错位补偿，完美无缝拼接
- 精彩控制：多屏统一画质，享真实“巨幕”
- 高分辨率：细腻屏幕分辨，画面缩放自如
- 高亮屏幕：高亮屏幕显示，远场优质观感
- 超宽视角：178°可视，精彩全视角
- 控制端口齐全，控制方式任由选择

Ultra-narrow bezel: Seamless splicing creates a huge screen to offer you fresh visual experience. Accustomed splicing: Matrix control for easy splicing, screen combination at your will. Perfect screen splitting: Automatic dislocation compensation, perfect seamless splicing. Abundant control ports, optional control modes. Wonderful control: Uniform picture quality on multiple screens, offering you realistic viewing experience on a "huge screen". High resolution: Delicate screen resolution, zoom pictures as you like. High brightness: Display on high brightness screens, providing excellent viewing experience and perception even in distance. Super-wide viewing angle: 178° viewing angle gives wonderful experience.



产品特性：

Product features

ADSDS超级硬屏技术

智能温控技术，高温检测报警

智能区域放大，深入洞察细节

背光动态调节，随环境光智能调节

自动消残影，防灼伤

3D滤波及数字降噪技术

智能透雾技术，图像显示更清晰

ADSDS technology. Intelligent temperature control technology, high temperature detection alarm. Intelligent regional amplification, insight into the details. Dynamic backlight adjustment, adoptive to ambient light. Automatic elimination of image retention, anti burning. 3D filter and digital noise reduction technology. Fog penetration technique, display image more clearly.

应用场所：

Applications

会议室、展馆、展厅、监控中心、指挥调度中心等场所

Conference rooms, exhibition halls, exhibition halls, monitoring centers, command and control centers and other places

65" 4K OGS触控一体机

65 inch 4K OGS IWB

无限交互，自由触控，双系统完美融合，精彩体验尽在掌握
Feel free to touch and control this perfectly integrated dual-system device for amazing interactive experience



全球最大尺寸OGS多点触控硬屏
尽享PAD般触控感受
薄型化设计、全贴合工艺
给用户带来极佳的视觉体验
整体设计硬朗沉稳、简洁典雅
底座高度可调，织物装饰尽显温暖
内置智能会议系统，轻松实现无纸化办公

The largest OGS multi-touch screen gives you PAD-like touch experience. Slimbody design and Direct Bonding Process bring users excellent visual experience. Hale, simple and elegant design, adjustable base height, fabric decoration providing a warm feeling. Built-in intelligent conference system easily achieves paperless office. Suitable for use in such areas as finance, education and government affairs.



产品特性：

Product features

图像降噪技术
智能控光技术
区域控光技术
全网浏览器
社交电视

无线智能共享
硬屏+
超宽视角
高透过率

Image Denoising Technology
Smart Dimming Technology
Local Dimming Technology
Web Browser
Social TV
Smart WiFi Hotspot
ADSDS Panel
Super-wide Viewing Angle
High Transmittance

应用场所：

Applications

会议室、展厅、教室、办公室等场所
Conference room, exhibition hall, classroom, office and so on



智能交互一体机 55" 65" 70" 86" 98"

IR IWB 55 inch、65 inch、70 inch、86 inch、98 inch、

前沿突破，一体化集成应用
Cutting-edge technology with integrated applications

极致超窄边框，纤薄机身85mm
定位精确，反馈灵敏，多点无盲区
防眩屏幕，无畏强光，清晰显示
音视数据，接口齐全，多重模式
一键切换，按键、接口侧位设计
美观方便实用，模块化组装
多重组合，简洁易装，一体化防尘



Ultra-narrow bezel, 85mm thickness. Accurate positioning, sensitive feedback, multi-touch without dead zone. Anti-glare screen gives clear display without disturbance by strong light. Sufficient ports for inputting and outputting audio and video data; one-key switch among different modes. Keys and ports are designed on the side, user-friendly and good-looking. Modular assembly and multiple combinations allow easy installation and integrated dust prevention.

产品特性：

Product features

- | | | |
|--------|--------|-----------------------------|
| 图像降噪技术 | 杜比环绕音效 | Image Denoising Technology |
| 智能控光技术 | 全网浏览器 | Smart Dimming Technology |
| 区域控光技术 | 社交电视 | Local Dimming Technology |
| 硬屏+ | 无线智能共享 | ADSDS Panel |
| 超宽视角 | 高透过率 | Super-wide Viewing Angle |
| | | Dolby Surround Sound Effect |
| | | Web Browser |
| | | Social TV |
| | | Smart WiFi Hotspot |
| | | High Transmittance |

应用场所：

Applications

会议室、展厅、教室、办公室等场所
Conference room, exhibition hall, classroom, office and so on



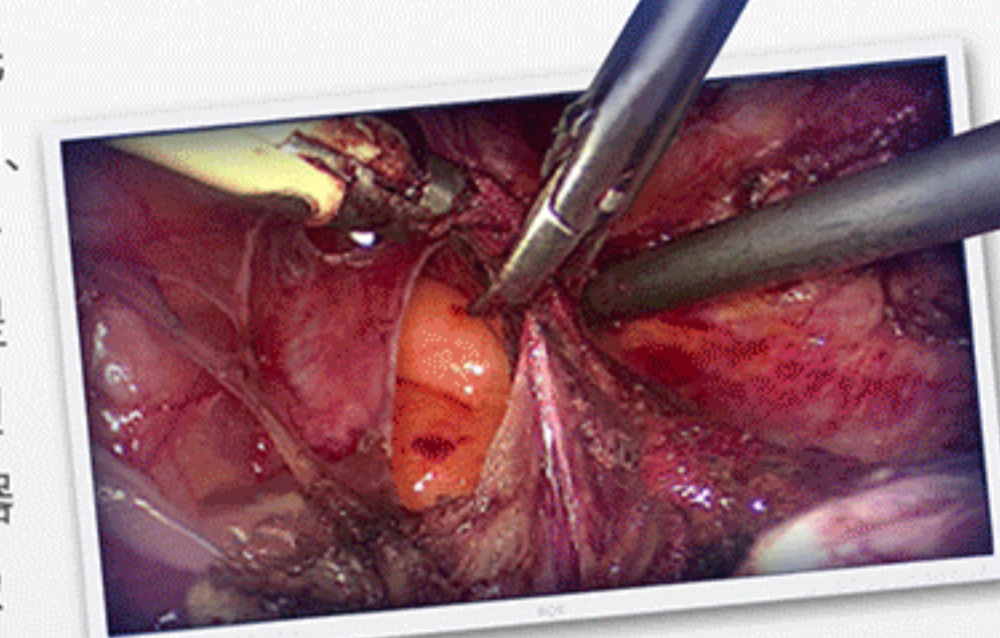
55" 3D医疗显示器

55 inch 3D Medical Display

大尺寸、高分辨率、立现场感

Large size, high resolution and stereoscopic sense of scene

通过打造健康档案区域医疗信息平台，利用最先进的物联网技术，实现患者与医务人员、医疗机构、医疗设备之间的互动，逐步达到信息化。基于BOE显示领域优势，及医学影像需要更好效果的呈现设备以减少手术时间，帮助医患减轻手术负担为目的，BOE推出4K超高清3D55英寸医疗显示器-BME3D55U1，符合DICOM医学校正高精度图像校正算法，能够发现细微处的病理变化亮度稳定。



Through the establishment of health archives regional medical information platform, the use of the most advanced Internet of things technology, to achieve the interaction between patients and medical personnel, medical institutions, medical equipment, and gradually to achieve information. Based on BOE's advantages in the field of display and the fact that medical imaging requires equipment with better effects to reduce surgery time and burden of surgery on patients, BOE launches 4K medical display BME3D55U1 with ultra-high-definition sized at 3D55 inches. Consistent with DICOM Medical Calibration Image correction algorithm with high precision that can discover slight pathological changes Stable brightness.

产品特性：

Product features

- | | | |
|-----------|-----------|---------------------------------------|
| 超宽视角 | 无闪烁立体显示 | Features are super wide angle of view |
| 硬屏+ | 立体景深微调 | Hard screen |
| 超高色彩表现力 | 3D左右眼亮度检测 | Ultra-high color expression |
| 超高速运动画面处理 | 镜像显示 | UHS Moving Picture Processing |
| 多画面显示 | | Multi screen display |
| | | Flicker free stereoscopic display |
| | | Fine tuning of stereoscopic depth |
| | | 3D brightness detection |
| | | Mirror display |

应用场所：

Applications

手术室、医学教室、会诊室等场所
Operation room, medical classroom, consultation room and so on

云桌面

Cloud Desktop

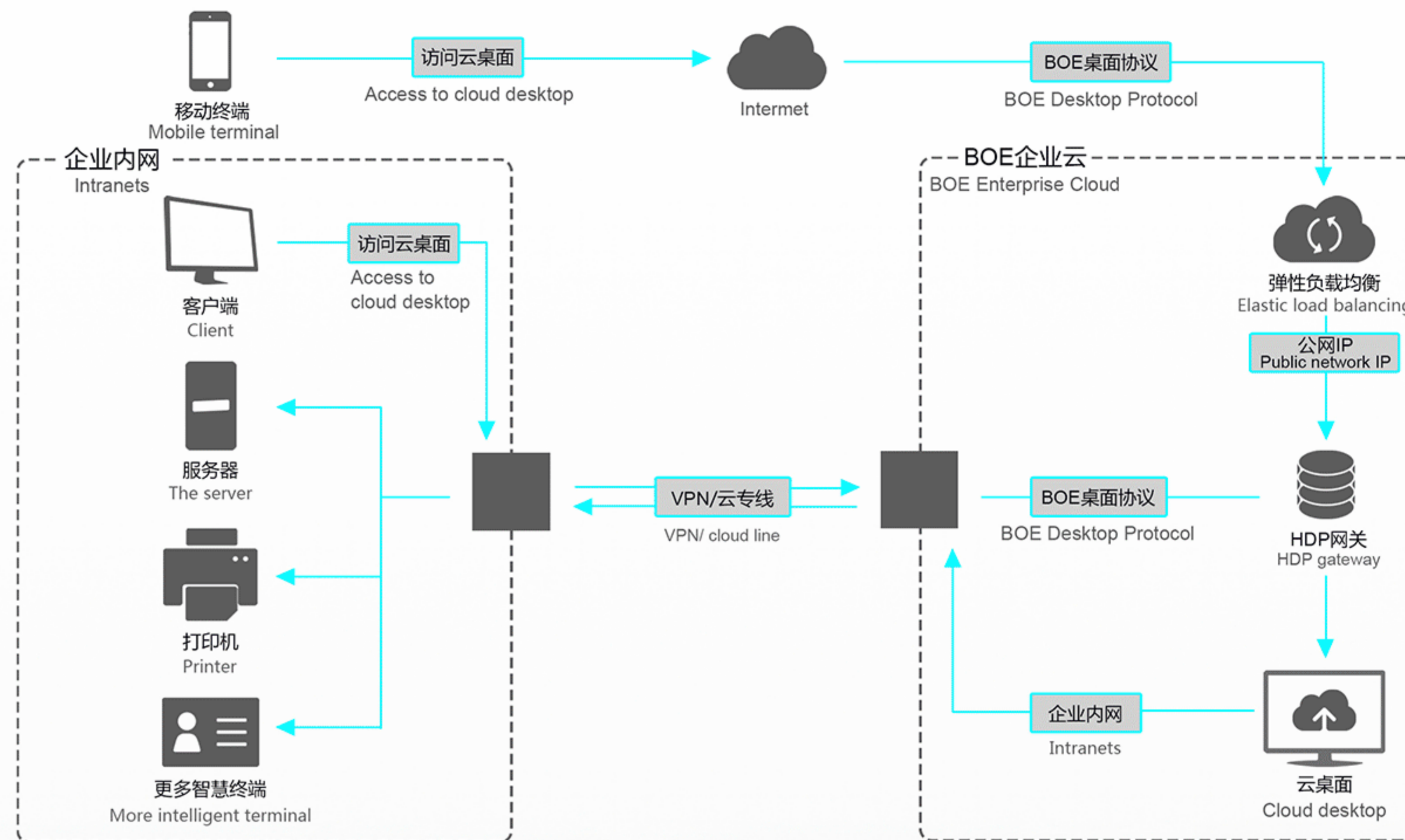
管理方便、安全、省维护、省时间、省钱

Convenient and safe management, with less maintenance, time and money



云桌面基于分布式云计算存储技术集成互联网精华应用，依托高度加密算法可以把数据空间管理服务以桌面化的方式发布给操作者，适合作为平板、手机等微持化移动应用的网络操作系统，也可以将传统PC升级为网络操作显示外观可根据用户需求定制

Cloud desktop is based on distributed cloud computing and storage technology. Integrating Internet application, relying on a strong encryption algorithm. release data space and management services by cloud desktop to the operator. Could be network operating system for pad, mobile phone and other micro mobile application, traditional PC can be upgraded to the network operation. Appearance can be customized according to user needs.



产品特性：

Product features

ADSDS硬屏+
超宽视角
21.5 FHD高清屏幕
6路USB接口
千兆以太网口

WIFI功能可选

电源、驱动、电脑一体化设计、
散热、EMC一体化设计
多种配置满足您的需求，快拆
设计让您运维、升级方便

ADSDS Panel. Super-wide Viewing Angle. 21.5 FHD screen. USB*6.Gigabit Ethernet port. Optional WIFI.Integrated design of power, drive and PC.Integrated design of heat dissipation and EMCA variety of configurations to meet all needs.Fast disassembly design makes your operation, maintenance and upgrading more easy.

应用场所：

Applications

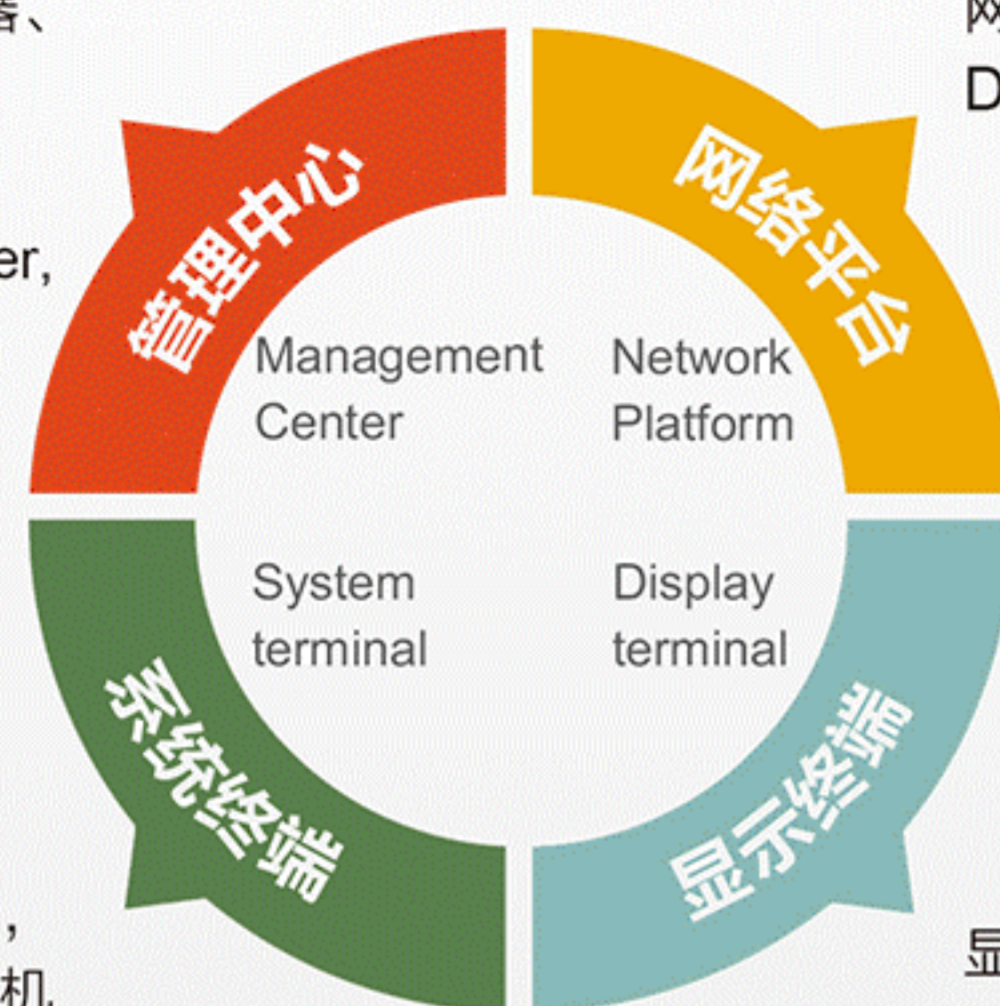
工厂、办公瘦终端；数字班牌；楼宇广告；医疗查询、叫号终端等场所
Factories, office thin terminal; digital class brand; building advertising; medical station terminal query, etc.

多媒体发布系统

Multimedia Information Release System

由播放管理工作站、服务器、
节目制作中心等部分组成

Consisting of playback
management station, server,
program recording center,
etc.



网络平台由以太网、互联网、
DDN、WLAN、ADSL 等组网

The network platform is
composed of Ethernet,
Internet, DDN, WLAN,
ADSL, etc.

采用单芯片嵌入式系统设计，
即插即用、不染病毒、不死机

Designed as a single-chip
embedded system; plug-and-play,
virus-free, crash-free.

显示屏、拼接屏等媒体播放端

Display screen, splicing screen
and other media player terminals.

智能会议系统

Intelligent Conference System

云端会议系统服务平台；会议主持-交互一体机；参会者-智能pad

A cloud-based conference system service platform; conference presider - All-in-one Interaction Machine; attendants - Smart Pad

基本功能：

Basic Functions

后台管理	Background Management
保密权限	Security Rights
会议签到	Attendant Sign-in
参会人员	Conference Attendants
同步现场	On-site Synchronization
会议文件	Conference Files
个人资料	Personal Data
会议记录	Conference Minutes
会议主持	Conference Presider



其他功能：

Other Functions

电子签名	Electronic signature
同步浏览	synchronous browsing
强制同步	forced synchronization
会议投票	voting at conference
电子白板	electronic whiteboard

应用场所：

Applications

在银行、写字楼等办公
场所使用无纸化办公

It is used in such places as banks and office
buildings for paperless office

功能特点

Functional characteristics

播出效果 Playback effect	最高支持 1080P 高清视频、图片播放 Playback effect Support playback of up to 1080P HD videos and images 支持同一屏幕上切分成多个区域，同时显示视频、图片、滚动字幕、logo 等信息 Support segmentation into several zones on one screen; meanwhile display videos, images, scrolling texts, logos and other information
系统能力 System capability	具备多种大型系统维护机制，支持万台以上终端部署及管理功能 There are several large system maintenance mechanisms; support deployment and management of more than 10,000 terminals
管理工具 Management tools	所有操作及维护均可通过网络远程实现，故障自动告警，具备多种远程自我管理实用工具 All operations and maintenance work can be realized remotely via network; give alarms automatically in case of a fault; provide several utility tools for remote self-management 具备对系统内终端按组进行播放、下载等自我管理工具 Provide self-management tools for terminals in the system to perform group playback and download
网络支持 Network support	支持局域网、广域网、wifi、3G 的多网混组方式，保障系统组建的便利性 Network support Support mix use of multiple networks such as LAN, WAN, WiFi and 3G, to ensure the convenience of system construction 通过非实时下载方式进行播放，同时支持点对点流量控制功能，将系统对网络的依赖性降至最低 Support playback by non-real time download and also support point-to-point flow control function to minimize system dependence on network
安全稳定 Security and stability	内容发布多级审核，BS/CS 两种架构供选择，全面保障播放安全 Review released contents at multiple levels; adopt BS architecture of highest security and provide a tamper-proof mechanism to comprehensively guarantee playback security 支持 7×24 小时运行，保障客户运营收益 Adopt embedded Linux system, virus- and crash-free; support 7×24h running to guarantee customers' operating income
系统扩展性 System extensibility	可根据客户实际应用情况，针对性的扩展系统能力，支持 LCD、LED 等多种显示设备 Extend system functions based on customers' actual application conditions; support multiple display devices such as LED, LCD, PDP and CRT



电子货架标签 ESL

Electronic Shelf Label

提高消费者购物体验

Enhance customer experience

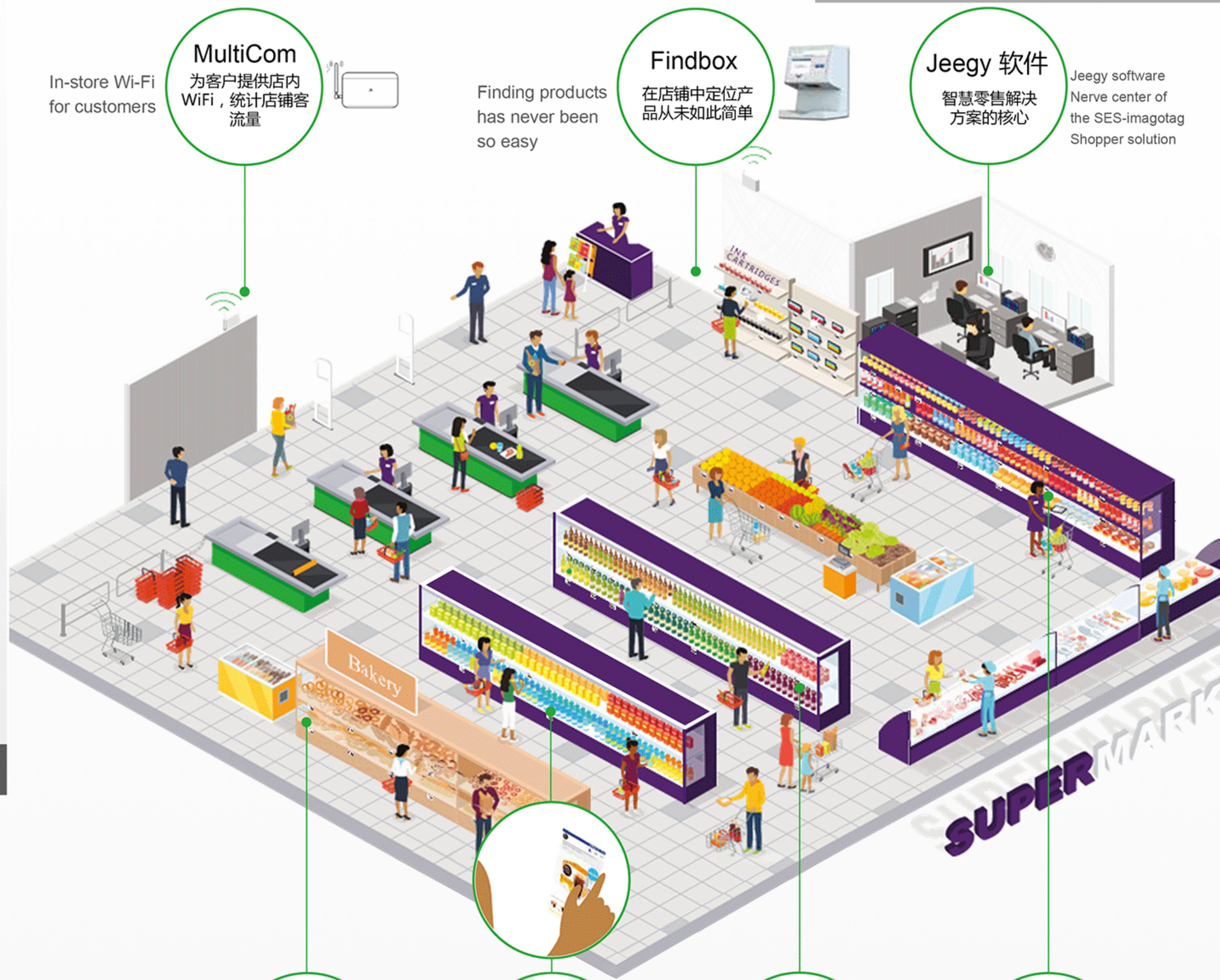


在线上融合的世界中，全渠道同步的解决方案对于任何希望在店铺和购物者之间提供无缝购物体验的人而言至关重要。通过交互式数字价格标签、店内购物者连接、移动自助扫描和产品定位等解决方案，为店铺和购物者创造了全新的体验。产品的屏幕显示有1.6、2.2、2.6、2.7、4.2、4.4、4.5、6.0、7.4寸多种规格。

In a world where in-store and online commerce converge, synchronization through omnichannel solutions has become vital for anyone wishing to offer a seamless shopping experience between their stores and their clients.

Through interactive digital price tags, in-store shopper connectivity and solutions such as mobile self-scanning and product geolocation, the connected store by creates a whole new experience for shoppers.

The product screen displays 1.6, 2.2, 2.6, 2.7, and 4.2, 4.4, 4.5, 6, 7.4 inches of various specifications.



In-store Wi-Fi for customers

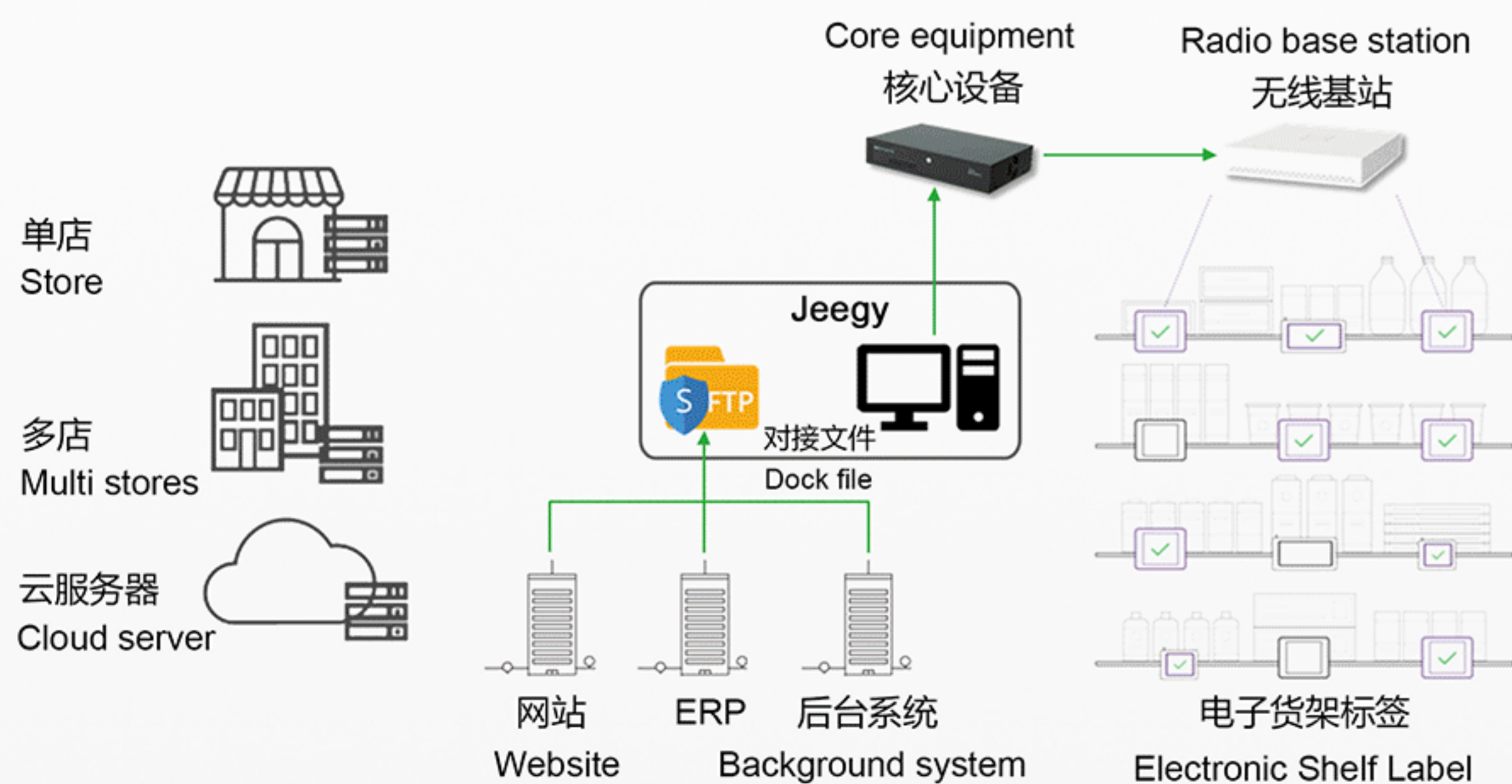
MultiCom
为客户提供店内WiFi，统计店铺客流量

Finding products has never been so easy

Findbox
在店铺中定位产品从未如此简单

Jeegy 软件
智慧零售解决方案的核心

Jeegy software
Nerve center of the SES-imagotag Shopper solution



Pricing intelligence
Loyalty finally well rewarded

智能定价
自学习烘焙店智能制定烘焙计划和定价策略

Shopper engagement
Real-time web-to-store information. Questions will no longer stay unanswered

顾客参与
网页和店铺信息实时互连，问题无人解答的情况将不复存在

电子货架标签
在正确的时间显示正确的价格

Digital price tags
Showing the right price at the right time

产品定位
方便找到、轻松搜索 (为顾客搜索和定位产品的摆放位置)

Product geolocation
Easy find, easy search (Search & Locate for shoppers)

iGallery数字艺术馆

iGallery Digital Art Gallery

汇聚世界艺术 欣赏触手可及

Bring together the world, art appreciation is within reach



BOE iGallery是一款智慧数字艺术馆集艺术启蒙、欣赏、分享、交易及亲情互动为一体的艺术体验云平台

BOE iGallery is an intelligent digital art platform for artistic appreciation,edification, sharing,trade and communication.

产品特性：

Product features

装饰空间	自动感光	Decoration	Automatic sensitization
艺术启蒙	智能节能	Edification	Intelligent energy-saving
艺术欣赏	真实色彩还原	Appreciation	True color reduction
图片分享		Sharing	

应用场所：

Applications

家居、画廊、展厅、影楼、艺术教育机构、酒店、咖啡厅、办公大楼等场所
Home, gallery, exhibition hall, studio, art education institution, hotel, coffee shop, office building and so on



数字标牌

Digital Signage

多媒体信息实时发布，商务典范

Real-time display of multimedia information, setting up a business model

超薄机身，金属底座，铝合金外框，时尚简约
组播、点播、插播，多重模式，随心选择
全区域选择，任意位置，任意格式，随意显示
亮丽色彩：高对比度，艳丽画面栩栩如生
智能控光：自动调节，适应复杂环境光
超广视角：178°可视，精彩全视角
嵌入式Linux操作系统，远程发布，实时管理

Ultra slim body, metal base and aluminum alloy frame, simple and fashionable. Multicast, video on demand, inter-cut, multiple modes, free choice. Any position of the whole display area can be selected to freely display in any format. Bright color: High contrast, bright and vivid pictures. Smart dimming: Automatic adjustment to adapt to complex ambient light. Super-wide viewing angle: 178° viewing angle gives wonderful experience. Embedded Linux OS achieves remote release and real-time management.



产品特性： 图像降噪技术
Product features 智能音量技术
硬屏+

Image Denoising Technology
Smart Volume Control Technology
ADSDS Panel

超宽视角
高透过率
超高速运动画面处理

Super-wide Viewing Angle
High Transmittance
UHS Moving Picture Processing

应用场所： 候机大厅、办公大楼入口、大厦
Applications 楼道、电梯口等处显示指引信息
及产品信息发布

It is used in such places as airport terminals, office building entries, building passageways and elevator lobbies for display of guidance information and release of product information.

Technical Parameters 技术参数 P35

条形显示产品

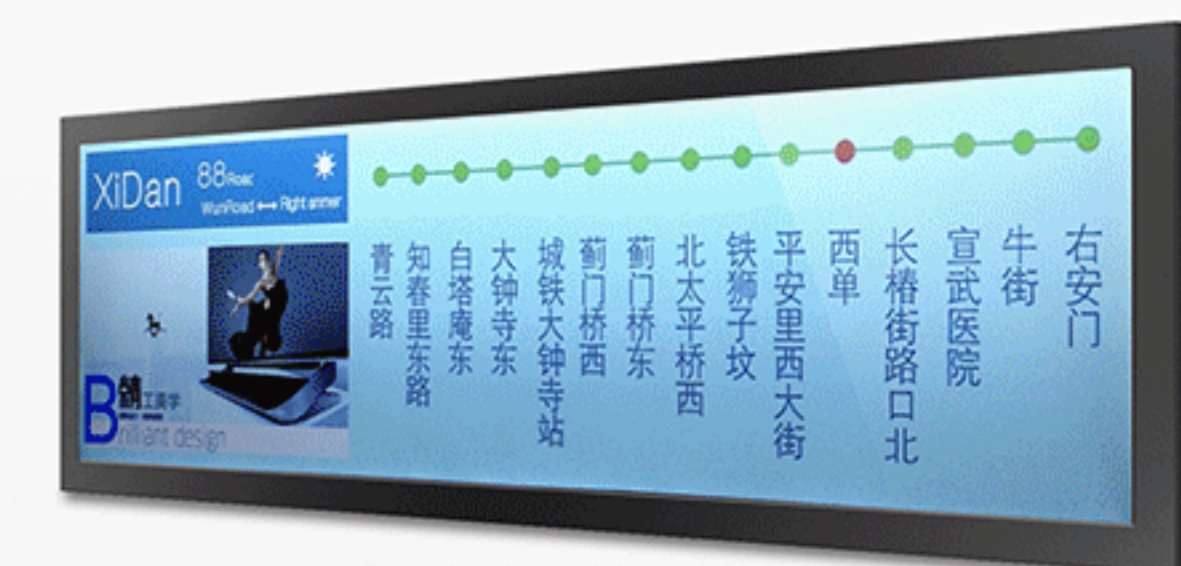
LED Bar Display

条形视界，无限延展，智尚新媒体

Bar display, infinite extension, new intelligent media

与各种叫号系统配合，显示叫号信息
叫号，播放相关产品介绍视频便捷切换
支持视频播放功能：新闻视频，广告视频，宣传片等
支持图片播放功能：新闻图片，广告图片，宣传画等
支持实时文本信息发送功能：天气，通知，外汇牌价，理财产品等实时信息

Display queuing information, compatible with various queuing systems. Convenient switch between queuing information and product introduction videos. Support video playback function: news videos, advertising videos, propaganda films, etc. Support image playback function: news photos, advertising images, propaganda posters. Support real-time text information push function: weather, notification, foreign exchange rate, financial products and other real-time information.



产品特性： 图像降噪技术 超宽视角
Product features 硬屏+ 高透过率

Image Denoising Technology
ADSDS Panel
Super-wide Viewing Angle
High Transmittance

应用场所： 在地铁轨道车上、机场办证柜台
Applications 等处显示车站路线、叫号信息

It is used to display station line and queuing information in rail vehicles, at airport counters, etc.

Technical Parameters 技术参数 P35



透明显示产品

Transparent Display

透明智能，多重展现精彩内涵

An intelligent transparent product presenting wonderful contents

透明可切换：亦幻亦真，虚实自由选择 灵敏触控：多点触控，随心交互控制
 超级硬屏：按压无痕，绽放自然色彩 集成设计：一体化模块，装卸简捷
 超宽视角：178°可视，精彩全视角 多重模式：多媒体接口，一键切换
 卓越降噪：清晰流畅，彰显细腻高清

Adjustable transparency: Free choice of transparency level achieves both realistic and magic effects.
 Super ADSDS Panel: Resistant to push and press, fully displaying natural colors. Super-wide viewing angle: 178° viewing angle gives wonderful experience. Excellent denoising: Allowing clear and smooth display of delicate FHD pictures. Sensitive touch control: Multi-touch function makes interaction control a piece of cake. Integrated design: Integrated module allows easy assembly and disassembly. Multiple modes: One-key switch among different multimedia ports.

产品特性： 图像降噪技术 超宽视角

Product features 硬屏+ 高透过率

Image Denoising Technology Super-wide Viewing Angle
 ADSDS Panel High Transmittance

应用场所： 在自动售货机、奢侈品专柜、透明冰箱门、

Applications 箱门，展示产品同时播放产品介绍

In the vending machines, luxury counters, transparent refrigerator door, display products, while playing product introduction

Technical Parameters 技术参数 P36



工业级监视器

Industrial Monitor

不间断监视，不丢失每一点细节，不错过每一帧画面

Uninterrupted monitoring captures every detail and every picture

接口丰富，支持多种信号输入
 真彩色OSD，中英文双语菜单，人性化操作
 超薄设计，金属外壳，外观新颖美观，安装快捷简便
 全视角技术，全方位呈现真实画质
 高清画质，完美还原高清色彩
 全球领先的3D数码梳状滤镜降噪技术
 降低弱信号图像的噪波干扰

Abundant ports support input of a variety of signals. True color OSD, menus in both Chinese and English languages, user-friendly operation. Ultra slim design, metal housing, novel and beautiful appearance, easy and fast installation. Full viewing angle technology provides true picture quality in an all-around manner; HD picture quality perfectly revivifies the color. Globally leading 3D digital comb filter denoising technology reduces noise interference of weak signal images.

产品特性： 图像降噪技术 超宽视角

Product features 硬屏+ 高透过率

超高速运动画面处理

Image Denoising Technology Super-wide Viewing Angle
 ADSDS Panel High Transmittance

UHS Moving Picture Processing

应用场所： 在工厂、商超、楼宇、商业设施的

Applications 监控室显示监控信息

It is used to display monitoring information in monitoring rooms of factories, supermarkets, buildings and commercial facilities.

Technical Parameters 技术参数 P36



显示器 19" 21.5" 23.8"

Monitor 19 inch、21.5 inch、23.8 inch

超宽视角，展现极致色彩

Ultra wide angle of view, show the ultimate color



- 超宽视角：178°可视，精彩全视角
- 接口丰富：多种接口，兼容数字模拟
- LED背光：寿命更长，显示更稳定
- 色彩丰富：色域更广，还原度更高
- 高清显示：更高分辨率，更高清晰度

Ultra wide viewing angle: 178 degrees visible, wonderful full view
 Interface rich: a variety of interfaces, compatible with digital simulation
 LED backlight: longer life, more stable display
 Rich colors: wider gamut, higher degree of reduction
 HD display: higher resolution, higher definition

产品特性：

Product features

超宽视角
接口丰富

更高色域
高清画面

Ultra wide viewing angle
 Interface rich
 Higher color gamut
 HD picture

应用场所：

Applications

办公区、家用、商用等场所
 Office areas, Home, Commercial and other places



110" 4K智能显示终端

110 inch 4K Intelligent Display Terminal

产品型号 Product model		S1B0MA10-4K	
面板 Panel	面板类型	Type of panel	ADSDS
	分辨率	Resolution	3840x2160
	亮度 (cd/m ²)	Brightness	≥ 450
	静态对比度	Static contrast	≥ 1000:1
	色域	Color gamut	72%
	刷新率	Refresh rate	120Hz
	背光类型	Type of backlight	D-LED
画质 Picture quality	图像显示比例	Aspect ratio	16:9 4:3 全景、放大 1、放大 2 (16:9, 4:3, Panorama, Zoom 1, Zoom 2)
	支持分辨率	Supported resolutions	480p, 576p, 720p, 1080i, 1080p, 4K
	可视角度	Viewing angle	89° (水平) / 89° (垂直) 89° (horizontal) / 89° (vertical)
	动态背光控制	Dynamic backlight control	是 (Yes)
音频 Audio	最大输出功率 (W)	Max. output power	15x2
	音频解码技术	Audio decoding technology	mp3 aac wma
	自动音量调节 (AVL)	Auto volume control	是 (Yes)
接口 Ports	输入输出接口	Input and output ports	VGA 输入 x1, HDMI (1.4) 输入 x2, HDMI (2.0) 输入 x2, USB 输入 x3, 光纤音频输出 x1, PC 音频输入, RS-232 输入 (VGA IN x1, HDMI (1.4) IN x2, HDMI (2.0) IN x2, USB IN x3, Optical Audio OUT x1, PC Audio IN, RS-232 IN)
多媒体格式 Multimedia formats	(USB) 支持文件格式	(USB) Supported file formats	RM, RMVB, H.265 VC-1, .jpg/jpeg .png .bmp, .mp3 .wma .m4a/aac, .txt
结构尺寸 Structural dimension	整机不含底座 (WxHxD)(mm)	Overall dimension not including base	2504x1488x134(172kg)
	整机含底座 (WxHxD)(mm)	Overall dimension including base	2504x1921x622(190kg)
电源能耗 Electric energy consumption	电源输入电压	Power input voltage	100V/60Hz~264V/50Hz
	能效指数	Energy efficiency index	国家一级能效 (National Level 1)
	整机功率 (W)	Overall power	<1400
	待机功率 (W)	Standby power	<0.5
能耗、工作环境 Energy consumption operating environment	功率、能效	Power & energy efficiency	100V/60Hz~264V/50Hz、<1400W、<0.5W
	工作温度 / 湿度	Operating temperature / relative humidity	0°C ~40°C /20%~80% (非凝露) (Non condensing)

110" 8K智能显示终端

110 inch 8K Intelligent Display Terminal

产品型号 Product model		S1B0MA10-8K	
面板 Panel	面板类型	Type of panel	ADSDS
	分辨率	Resolution	7680x4320
	亮度 (cd/m ²)	Brightness	≥ 400
	静态对比度	Static contrast	≥ 800:1
	色域	Color gamut	72%
	刷新率	Refresh rate	60Hz
	背光类型	Type of backlight	D-LED
画质 Picture quality	图像显示比例	Aspect ratio	16:9 4:3 全景、放大 1、放大 2 16:9, 4:3, Panorama, Zoom 1, Zoom 2
	支持分辨率	Supported resolutions	480p, 576p, 720p, 1080i, 1080p, 4K, 8K
	可视角度	Viewing angle	89° (水平) / 89° (垂直) 89° (horizontal) / 89° (vertical)
	动态背光控制	Dynamic backlight control	是 (Yes)
音频 Audio	最大输出功率 (W)	Max. output power	15x2 ± 10%
	音频解码技术	Audio decoding technology	mp3 aac wma
	自动音量调节 (AVL)	Auto volume control	是 (Yes)
接口 Ports	输入输出接口	Input and output ports	VGA 输入 x1, HDMI (1.4) 输入 x2, HDMI (2.0) 输入 x1, USB 输入 x3, Ethernet (RJ45) x1, Wi-Fi 是 (802.11b/g/n) (VGA IN x1, HDMI (1.4) IN x2, HDMI (2.0) IN x2, USB IN x3,)
多媒体格式 Multimedia formats	(USB) 支持文件格式	(USB) Supported file formats	RM, RMVB, H.265 VC-1, .jpg/jpeg .png .bmp, .mp3 .wma .m4a/aac, .txt
结构尺寸 Structural dimension	整机不含底座 (WxHxD)(mm)	Overall dimension not including base	2563x1547x154(212kg)
	整机含底座 (WxHxD)(mm)	Overall dimension including base	2563x1983x638(230kg)
电源能耗 Electric energy consumption	电源输入电压	Power input voltage	100V/60Hz~264V/50Hz
	能效指数	Energy efficiency index	国家一级能效 (National Level 1)
	整机功率 (W)	Overall power	<1400
	待机功率 (W)	Standby power	<1
能耗、工作环境 Energy consumption operating environment	功率、能效	Power & energy efficiency	100V/60Hz~264V/50Hz、<1400W、<1W
	工作温度 / 湿度	Operating temperature / relative humidity	0°C ~40°C /20%~80% (非凝露) (Non condensing)

98" 4K智能显示终端

98 inch 4K Intelligent Display Terminal

产品型号 Product model		BL4K098A1	
面板参数 Panel parameters	品牌	Panel manufacturer	BOE
	分辨率	Resolution	3840x2160
	显示面积 (mm)	Display area	2158.848x1214.352
	亮度 (cd/m ²)	Brightness	500
	对比度	Contrast	1300:1
	色域	Color gamut	72%
	刷新率	Refresh rate	60Hz
画质 Picture quality	图像显示比例	Aspect ratio	16:9 4:3 全景、放大 1、放大 2 (16:9, 4:3, Panorama, Zoom 1, Zoom 2)
	支持分辨率	Supported resolutions	480p, 576p, 720p, 1080i, 1080p, 4K
	可视角度	Viewing angle	178°
	动态背光控制	Dynamic backlight control	是 (Yes)
音频 Audio	最大输出功率 (W)	Max. output power	15x2
	音频解码技术	Audio decoding technology	mp3 aac wma
	自动音量调节 (AVL)	Auto volume control	是 (Yes)
接口 Ports	输入输出接口	Input and output ports	HDMI 1.4 x3, HDMI 2.0 x1, VGA x1, PC_AUDIO x1, YPBPR x1, VIDEO x1, AUDIO x1, MEDIA-USB x3, HDMI x1, RF x1, RJ45 x1, VIDEO x1, SPDIF x1
多媒体格式 Multimedia formats	(USB) 支持文件格式	(USB) Supported file formats	RM, RMVB, H.265 VC-1, .jpg/jpeg .png .bmp, .mp3 .wma .m4a/aac, .txt
结构尺寸 Structural dimension	整机不含底座 (WxHxD)(mm)	Overall dimension not including base	2202.8x1257.8x109.5
	整机含底座 (WxHxD)(mm)	Overall dimension including base	2202.8x1717.47x494
能耗、工作环境 Energy consumption operating environment	电源、功率	Power & energy efficiency	100V~240V/50~60Hz、<1400W/<1W
	工作温度 / 湿度	Operating temperature / humidity	0°C ~40°C /20%~80% (非凝露) (Non condensing)

98" 8K智能显示终端

98 inch 8K Intelligent Display Terminal

产品型号 Product model		S198MA10	
面板参数 Panel parameters	面板产商	Panel manufacturer	BOE
	屏技术	Screen technology	ADS Panel
	分辨率	Resolution	7680x4320
	显示面积 (mm)	Display area	2158.848x1214.352
	亮度 (cd/m ²)	Brightness	400
	对比度	Contrast	1000:1
	色域	Color gamut	72%
	可视角度	Viewing angle	178°
	刷新率	Refresh rate	60Hz
	响应时间	Response time	8ms
画质 Picture quality	背光方案	Backlight solution	D-LED
	图像显示比例	Aspect ratio	16:9 4:3 全景、放大 1、放大 2 (16:9, 4:3, Panorama, Zoom 1, Zoom 2)
	支持分辨率	Supported resolutions	480p, 576p, 720p, 1080i, 1080p, 4K, 8K
	可视角度	Viewing angle	178°
音频 Audio	动态背光控制	Dynamic backlight control	是 (Yes)
	最大输出功率 (W)	Max. output power	15x2
	音频解码技术	Audio decoding technology	mp3 aac wma
接口 Ports	自动音量调节 (AVL)	Auto volume control	是 (Yes)
	输入输出接口	Input and output ports	VGA x1, SPDIF x1, USB 2.0 x2, USB 3.0 x1, RJ45 x1, Audio x1, HDMI 2.0 x1, DVI x16, HDMI 1.4 x2
多媒体格式 Multimedia formats	(USB) 支持文件格式	(USB) Supported file formats	RM, RMVB, H.265 VC-1, .jpg/jpeg .png .bmp, .mp3 .wma .m4a/aac, .txt
结构尺寸 Structural dimension	整机不含底座 (WxHxD)(mm)	Overall dimension not including base	2228x1329x143 (200kg)
	整机含底座 (WxHxD)(mm)	Overall dimension including base	2228x1764x586 (218kg)
能耗、工作环境 Energy consumption operating environment	功率、能效	Power & energy efficiency	100/60Hz~264V/50Hz、国家三级能效 ≥ 1.3、<1400W/<1W (National Level 3)
	工作温度 / 湿度	Operating temperature / humidity	0°C ~40°C /20%~80% (非凝露) (Non condensing)

46" 55" 高/低亮度拼接显示单元

46 inch /55 inch High/Low Brightness Splicing Display Unit

产品型号 Product model		SL46SL010 SL46SH010	SL55SL010 SL55SH010	SL55LL020 SL55LH020	SL55SH020	S155VW12L
屏体参数 Screen parameters	尺寸 Dimension	46"	55"	55"	55"	55"
	拼缝 (mm) Seam (mm)	3.5	3.5	1.8	1.7	3.5
	背光类型 Type of backlight	LED				
	分辨率 Resolution	1920x1080				
	响应时间 (ms) Response time	8	8	5	5	5
	亮度 (cd/m ²) Brightness	500/700	500/700	500/700	700	500
	对比度 Contrast	4000:1				
	可视角度 Viewing angle	178°				
	色彩 Color	8Bit/16.7M		1.06 B		8Bit 16.7M
	刷新频率 Refresh rate	60Hz				
外形尺寸 (mm) Overall dimension	1021.98x576.57	1213.5x684.3	1211.4 x 682.2	1211.54 x 682.34	1213.5x684.3	
重量 (kg) Weight	24	31	31	31	33	
面板接口 Ports	输入接口 Input	HDMIx1, VGAX1, DVIx1, CVBSx5, YUVx1, S-Videox1, DPx1, USBx1		HDMIx1, VGAX1, DVIx1, CVBSx5, YUVx1, S-Videox1, USBx1		HDMIx1, DVIx1, VGAX1, DPx1, YPBPRx1, S-VIDEox1, VIDEox1, RGBHVx1, USBx1
	输出接口 Output	CVBSx2		VIDEox1, VGAX1, DVIx1		
	通信接口 Communication	RJ45x2 (RS485 IN & OUT)		RS232 (RS232 IN & OUT)		
电源参数 Power parameters	输入电源 Input power supply	AC 110~240V(50Hz/60Hz)				
	最大功耗 Max. power consumption	140W /145W	165W/170W	160W/210W	170W	200W
工作环境 Operating environment	工作温度 Operating temperature	0°C ~50°C				
	工作湿度 Operating relative humidity	10%~90%				
其他说明 Other instructions	安装方式 Installation mode	机柜式 / 机架式 / 壁挂式 (Cabinet / rack / wall-mounted)				
	操作方式 Operation mode	软件控制 (Software control)				
	定制功能 Customized function	支持画面分割, SD 卡 / USB 播放等 (Support picture splitting, SD card / USB playback and other customized functions)				

65" 4K OGS触控一体机

65 inch 4K OGS IWB

产品型号 Product model		S165WB10			
液晶面板 LCD panel	触控方案 Touch screen solution	OGS			
	屏幕比例 Aspect ratio	16:9			
	分辨率 Resolution	3840x2160			
	亮度 (cd/m ²) Brightness	350			
	静态对比度 Static contrast	800:1			
	响应时间 Response time	6ms (G to G)			
	刷新率 Refresh rate	120Hz			
接口 Ports	背光方案 Backlight solution	E-LED			
	CPU CPU	i5			
	内存 Memory	2x4G			
电脑盒 PC Box	接口 Ports	USB3.0x2, USB2.0x2			
	会议系统 Conference system Supported	支持 (Supported)			
音频 Audio	系统 Operating system	Win7/Win8			
	最大输出功率 Max. output power	2x8W			
多媒体 Multimedia	音频解码技术 Audio decoding technology	mp3 .wma .aac .flac			
	自动音量调节 (AVL) Auto volume control	是 (Yes)			
SOC 平台 SOC platform	输入输出接口 Input and output ports	RFx1, YPbPr x1, AV x1, VGA x1, HDMI (MHLx1, HDMI 1.4x2), USB (USB2.0x2, USB3.0x1), 耳机 Headset (3.5mm)x1, 光纤音频输出 Optical Audio OUT x1, PC 音频输入 PC Audio IN (3.5mm)x1, Ethernet 45 (RJ45) x1, RS232x1, WiFi (802.11b/g/n/ac)			
	(USB) 支持文件格式 (USB) Supported file formats	RM, RMVB, H.264 VC-1 H.265; .jpg .jpeg .png .bmp; .mp3 .wma .aac .flac			
特色应用 Special applications	多项应用 Multiple applications	主芯片 MSD 6A918, 内存 16G, 操作系统 Android 4.2, UI 界面 BOE 定制 UI, 支持在线刷机, 支持 DLNA 或其他多屏互动 APP, 支持 BOE 软件商店, 支持触控驱动、内置驱动摄像头 (MSD 6A918 master chip, 16G memory, Android 4.2 OS, BOE customized UI; supporting online flash, DLNA or other multi-screen interaction apps, BOE App Store, touch control drive, and built-in drive camera)			
	智能会议系统软件 Intelligent conference system software	支持 (Supported)			
结构 Structure	白板软件 Whiteboard software	支持 (Supported)			
	整机不含底座 Overall dimension not including base (WxHxD)(mm)	1491.2x868.7x56.5 (42kg)			
能耗、工作环境 Energy consumption & working environment	整机含底座 Overall dimension including base (WxHxD)(mm)	1491.2x1436.5x750 (72kg)			
	功率 Power	176~242V; 300W; <0.5W			
工作环境 working environment	工作温度 / 湿度	0°C ~40°C /20%~80% (非凝露) (non-condensing)			

55" 65" 70" 86" 98" 智能交互一体机

55 inch, 65 inch, 70 inch, 86 inch, 98 inch IR IWB

产品型号 Product model		TH55S200	TH65S300	TH70S100	TH86S100	TH98S100	
显示 Display	显示屏类型 Type of screen	TFT-LCD					
	显示面积 (mm) Display area	1209.6 (水平) (horizontal) x680.4 (垂直) (vertical)	1428.48 (水平) x803.52 (垂直)	1538.88 (水平) x865.62 (垂直)	1895.04(水平) x1065.96(垂直)	2158.848(水平) x1214.352(垂直)	
	分辨率 Resolution	1920x1080					
	亮度 (cd/m ²) Brightness	≥ 450		≥ 500	≥ 375	≥ 500	
	对比度 Contrast	对比度 Contrast ≥ 4000:1		对比度 Contrast 5000:1	对比度 Contrast 1200:1	对比度 Contrast 5000:1	
	可视角度 Viewing angle	178°					
	输入输出 接口 Input and output ports	AVx2, VGAX1, MINI-YPbPr/VCbCr/TVx1, HDMIx2, USBx1, USB 触摸口 Touch Por x1, 耳机接口 Headset Jack x1	HDMIx2, USB2.0x2, USB3.0x1, AVx2, YUVx2, VGAX2, PC Audiox3, VGA x1, Mini-YPbPr色差分量输出OUTx1, 音频耳机输出Audio Headset OUTx1, 音频同轴输出Coaxial Audio OUTx1, Android USB3.0x1, Android USB2.0, 外接USB 触摸端口External USB Touch Portx1, RJ45x1, RS232x1	射頻RFx1, AVx1, VGAX3 HDMI(2K)x3, HDMI(4K)x1, PC Audiox3, VGA x1, Mini-YPbPr色差分量输出OUTx1, 音频耳机输出Audio Headset OUTx1, 音频同轴输出Coaxial Audio OUTx1, Android USB3.0x1, Android USB2.0, 外接USB 触摸端口External USB Touch Portx1, RJ45x1, RS232x1	射頻RFx1, AVx1, VGAX2 HDMI(2K)x3, HDMI(4K)x1, PC Audiox3, VGA x1, Mini-YPbPr色差分量输出OUTx1, 音频耳机输出Audio Headset OUTx1, 音频同轴输出Coaxial Audio OUTx1, Android USB3.0x1, Android USB2.0, 外接USB 触摸端口External USB Touch Portx1, RJ45x1, RS232x1	射頻RFx1, AVx1, VGAX3 HDMI(2K)x3, HDMI(4K)x1, PC Audiox3, VGA x1, Mini-YPbPr色差分量输出OUTx1, 音频耳机输出Audio Headset OUTx1, 音频同轴输出Coaxial Audio OUTx1, Android USB3.0x1, Android USB2.0, 外接USB 触摸端口External USB Touch Portx1, RJ45x1, RS232x1	
	一体抽拉式模块电脑 Integrated pull-out pluggable PC	PC configuration	Intel Core 标配 i3, 内置集成 10/100/1000M 自适应网卡, 配备 WiFi 无线网卡, 集成显卡 / 集成声卡, 4G 内存 /500G 硬盘, 支持 winxp/win7 (Intel Core i3 of standard configuration, built-in 10/100/1000M integrated adaptive network card, WiFi network, integrated graphics card / integrated sound card, 4G memory / 500G hard disk, supporting WinXP/Win7)				
	接口 Ports	Ports	USB2.0x4, VGAX1, RS232 x1, HDMIx1, 音频线接口 Audio Cable Portx1, 话筒接口 Microphone Jackx1, 网络接口 Network technologyx1	USB3.0x4, HDMIx1, 音频线接口 Audio Cable Portx1, 话筒接口 Microphone Jackx1, 网络接口 Network technologyx1	USB2.0x5, USB3.0x2, VGAX1, HDMIx1, 音频线接口 Audio Cable Portx1, 话筒接口 Microphone Jackx1, 网络接口 Network technologyx1	USB2.0x5, USB3.0x2, VGAX1, HDMIx1, 音频线接口 Audio Cable Portx1, 话筒接口 Microphone Jackx1, 网络接口 Network technologyx1	USB2.0x5, USB3.0x2, VGAX1, HDMIx1, 音频线接口 Audio Cable Portx1, 话筒接口 Microphone Jackx1, 网络接口 Network technologyx1
	触摸书写系统 Touch writing system	触摸原理 Touch principle	红外多点触摸技术 (IR multi-touch technology)				
书写方式 Touch input		手指、笔, 或其他任何非透明物体 (Finger, stylus or any other non-transparent object)					
响应时间、精度 Touch response time and precision		<4 毫秒; ±2 毫米 (<4ms; ±2mm)					
其他说明 Other instructions	坐标输出 Coordinate output	4096x4096					
	安卓系统 Android OS	/		安卓 4.2\DDR31G 内存 \ 内部存储 4G\SD 卡 16G Android 4.2\1.5G DDR memory 4G internal storage \ 16G SD card	安卓 4.2\1.5G 内存 \ 内置 8G 存储 Android 4.2 \1.5G memory \ 8G internal storage		
整机功耗 (W) Overall power consumption	<150		<200	<350	≤ 500	≤ 650	
整机尺寸 (WxHxD)(mm) Overall dimension	1338.4x808.2x85		1566.7x936.7x95	1650x999x98	1978x1187x99	2257x1335x118	
净重 / 毛重 (kg) Net weight / gross weight	40/50		60/70	71/81	116/146	140/210	

55" 3D医疗显示器

55 inch 3D medical display

产品型号 Product model		55inch 3D显示器 55 inch 3D medical display			
面板 Panel	面板类型 Type of panel	ADS LCD			
	分辨率 Resolution	3840x2160			
	亮度 (cd/m ²) Brightness	≥ 500			
画质 Picture quality	图像显示比例 Aspect ratio	16:9			
	颜色 Color	1.073billion			
	2D视角 (°) 2D View angle	89/89/89/89			
	3D视角 (°) 3D View angle	U/D:20° (Typ.)			
	3D类型 3D Type	FPR			
接口 Ports	输入接口 Input	3G-SDIx4, DVI-Dx2, DPx1			
认证 Authentication	CCC, CE				
功能规格 Functional specification	多种3D格式选择 Many choices of 3D formats	Yes		side-by-side & line-by-line 3D	
	2D/3D切换 Switch of 2D/3D	Yes			
	视差模拟 Simulation of parallax	Yes			
	棋盘格 Checkerboard	Yes			
左右像切换 Switch of left and right	Yes				
图像多窗口切换 Multi-window switch of image	Yes				
镜像功能 Mirror function	Yes				

显示器

Monitor

产品型号 Product model		SM19B200	SM22B200	SM24B200
显示 Display	屏幕尺寸 Screen size	19"	21.5"	23.8"
	图像显示比例 Aspect ratio	16:10	16:9	16:9
	显示面积 (mm) Display area	408.24(H) x 255.15(V)	476.64(H) x 268.11(V)	526.88(H) x 296.37(V)
	分辨率 Resolution	1440x900	1920*1080	1920*1080
	点间距 Point spacing	0.2835mm	0.2482mm (H) x 0.2482mm (V)	0.276.75 mm x 0.276.75 mm
	显示颜色 Display color	16.7M	16.7M	16.7M
	刷新率 Refresh rate	H:30~80KHz V:60~77Hz	H:30~80KHz V:60~75Hz	
	亮度 (cd/m ²) Brightness	200	210	250
	背光类型 Type of backlight	LED		
	可视角度 Viewing angle	R/L 178° , U/D 178°		
接口 Ports	响应时间 Response time	5ms	5ms	8ms
	VGA	HDMI, DVI, VGA		HDMI, DVI, VGA, Audio
尺寸 Size	不含底座 Free base	441.73mm *298.64mm *48.37mm	507.84mm *313.71mm *51.50mm	577mm *347.7mm *51.2mm
能耗、工作环境 Energy consumption & working environment	工作电压 working voltage	AC 100~240V 50/60Hz 2A	100~240VAC/50~60Hz +/-3Hz	100V~240V, AC60/50Hz
	工作温度/湿度 Operating temperature / humidity	0° ~50° /10~80% RH	0° ~40° /0~90%RH	
净重 Net weight	2.5 kg	3.7 kg	4.5 kg	

iGallery数字艺术馆

iGallery digital art gallery

产品型号	Product model	32A600系列/32A800系列			
分辨率	Resolution	1920x1080	被动待机功率	Passive standby power	0.5W
额定电源	Rated power	100~240V~50/60Hz	外形尺寸	Outline size	高(H)803.0mmX宽(W)495.0mmX厚(D)46.5mm
亮度	Brightness	≥ 180cd/m ²	净重	Net weight	9.5kg
对比度	contrast ratio	700:1	自动感光	Automatic sensitization	255级
整机功率	Power	35W			

数字标牌

Digital Signage

产品型号	Product model	AM32B100	AM43B100	AM55B100	AM43L100	AM49L100	AM55L100	
液晶面板 LCD panel	显示尺寸	32" 壁挂 wall-mounted	43" 壁挂 wall-mounted	55" 壁挂 wall-mounted	43" 立式 vertical type	49" 立式 vertical type	55" 立式 vertical type	
	分辨率	1366x768	1920x1080	1920x1080	1920x1080	1920x1080	1920x1080	
	亮度 (cd/m ²)	360	360	360	360	360	360	
	静态对比度	1400:1	1400:1	1400:1	1200:1	1200:1	1300:1	
	可视角度	Viewing angle	178°					
	图像显示比例	Aspect ratio	16:9					
	显示面积(mm)	Display area	698.4x392.9	944.33x532.13	1209.6x680.4	532.13x944.33	606.8x1077.5	680.4x1209.6
	结构尺寸 Structural dimension	整机不含底座 (WxHxD)(mm)	755x463x55	988x595x58	1282x753x58	675x1820x366	739x1820x322	900x1930x500
接口 Ports	USB 输入	USB IN	2					
	信号接口	Signal port	SIMx1					
	网络接口	Network port	RJ45, WiFi (可选) (optional)					
	SD 卡插槽	SD card slot	1					
多媒体 (USB) 支持文件格式 Multimedia (USB) supported file formats	图片格式	Image format	BMP、JPEG、PNG、GIF 等					
	音频编码	Audio coding	MPEG-1 Layers I、II、III 2.0、WAV MPEG-4 AAC-LC 5.1、MPEG-4 BSAC 2.0 MPEG-4 HE-AAC 5.1、24-bit linear PCM 7.1					
应用 Application	操作系统	Operating system	嵌入式 linux 操作系统 (Embedded Linux OS)					
	电源要求	Power requirement	AC 100~240V 50/60HZ					
主要功能	Main functions	支持组播, 点播, rtsp, mms 实时流播; 通过网络接受媒体内容, 存储于本地后循环播放、插播、定时播放、垫片播放等; 实现自由分屏功能, 不同区域显示不同内容; 支持 32bit 真彩 OSD, 能显示在任意位置, 支持视频/图文混合, 能在视频上叠加图文; 支持完全透明、不透明、半透明等效果, 总体叠加可达 5 层 (Support multicast, video on demand, Real Time Streaming Protocol (RTSP), and Microsoft Media Server (MMS); receive media content via network and store it in the local machine to realize loop playback, inter-cut, timing playback, backup playback, etc.; achieve free screen splitting function to display different contents in different zones; support 32bit true color OSD to realize display at any position; support video/image-text combination to enable overlay of images and texts on videos; support completely transparent, non-transparent and semi-transparent effects; support stack of 5 layers in total.)						

条形显示产品

LED Bar Display

产品尺寸	Product size	28"	
液晶面板 LCD panel	分辨率	Resolution	1920x357
	可视角度	Viewing angle	178°
	亮度 (cd/m ²)	Brightness	700
	对比度	Contrast	3000:1
	色彩	Color	16.7M, 24bit RGB
	响应时间 (ms)	Response time	6.5
系统 System	视频格式	Video formats	H.264, MPEG4
	图片格式	Image formats	JPEG, PNG
	内部存储空间	Internal storage space	4G Byte
	外部存储空间	External storage space	客户指定 (最大支持 32G Byte) User-defined (up to 32G Byte)
能耗 Energy consumption	以太网	Ethernet	10M/100M bps
	485 接口	485 interface	38400bps
	输入电压 (V)	Input voltage	DC77~137
外型尺寸及重量 Overall dimension and weight	输入电流 (A)	Input current	< 1 (启动冲击电流冷态时 30A/DC 110V) <1 (surge current upon cold start: 30A/DC 110V.)
	整机功率 (W)	Overall power	< 40
绝缘强度 Insulation strength	整机外形尺寸 (WxHxD)(mm)	Overall dimension	738x217x50
	整机重量 (kg)	Overall weight	6.29
绝缘电阻 Insulation resistance	输入-输出交流	AC Input-output	3000V, 1分钟 1min
	输入-输出	Input-output	≥ 100MΩ, 直流 500V ≥100MΩ, DC500V
环境 Environment	工作温度	Operating temperature	-5°C ~40°C, 10%~90%RH (无凝露) (non-condensing)
	储存温度	Storage temperature	-20°C ~85°C, 5%~95%RH (无凝露) (non-condensing)
	海拔高度	Altitude	< 2000m
保护功能	Protection function	输出过压保护 115%~135% 的电压标称值, 并能自动恢复, 短路保护, 自动恢复 (Overvoltage protection when voltage output is 115%~135% of rated voltage with automatic recovery; short-circuit protection with automatic recovery)	

透明显示产品

Transparent Display

产品尺寸	Product size	46"		
液晶面板 LCD panel	显示屏类型	Type of screen	TFT-LCD 高透过程显示屏 (High-transmittance TFT-LCD screen)	
	显示面积 (mm)	Display area	1028.4 (水平) x 577.8 (垂直) 1028.4 (horizontal) x 577.8 (vertical)	
	边框 (U/D/L/R) (mm)	Bezel (U/D/L/R) (mm)	30/70/20/20	
	整机厚度 (mm)	Overall thickness	Max:12; Min:4	
	分辨率	Resolution	1920x1080	
	有效深度 (m)	Effective depth	1	
	中心亮度 (cd/m ²)	Center brightness	180	
	均匀性	Uniformity	35%	
	透过率	Transmittance	9.90%	
	色域 (NTSC)	Color gamut	40%	
系统 System	可视角度	Viewing angle	178°	
	主板	Motherboard	SHS3202AD-116H	
	OSD 语言	OSD language	中文 (默认), 英文 (Chinese (default), English)	
	显卡 / 声卡	Graphics card / sound card	集成显卡 / 集成声卡 (Integrated graphics card / integrated sound card)	
	电源供电	Power supply	100V/60Hz~240V/50Hz	
	操作系统	Operating system	Win XP (支持 Win 7) (Supporting Win 7)	
	接口	Ports	USB-A 输入、1 路 HDMI 接口、1 个 VGA 输出 (USB-A IN, 1 HDMI port, 1 VGA OUT)	
	工作温度	Operating temperature	0°C ~40°C	
	工作湿度	Operating relative humidity	20%~80% (非凝露) (non-condensing)	
	音频 / 喇叭特性	Audio / speaker properties	2x15W 音箱 (speakers)	
整机功率 (W)	Overall power	< 250		
整机特性	Overall properties	整机寿命 >50000h (Overall life)		

工业级监视器

Industrial Monitor

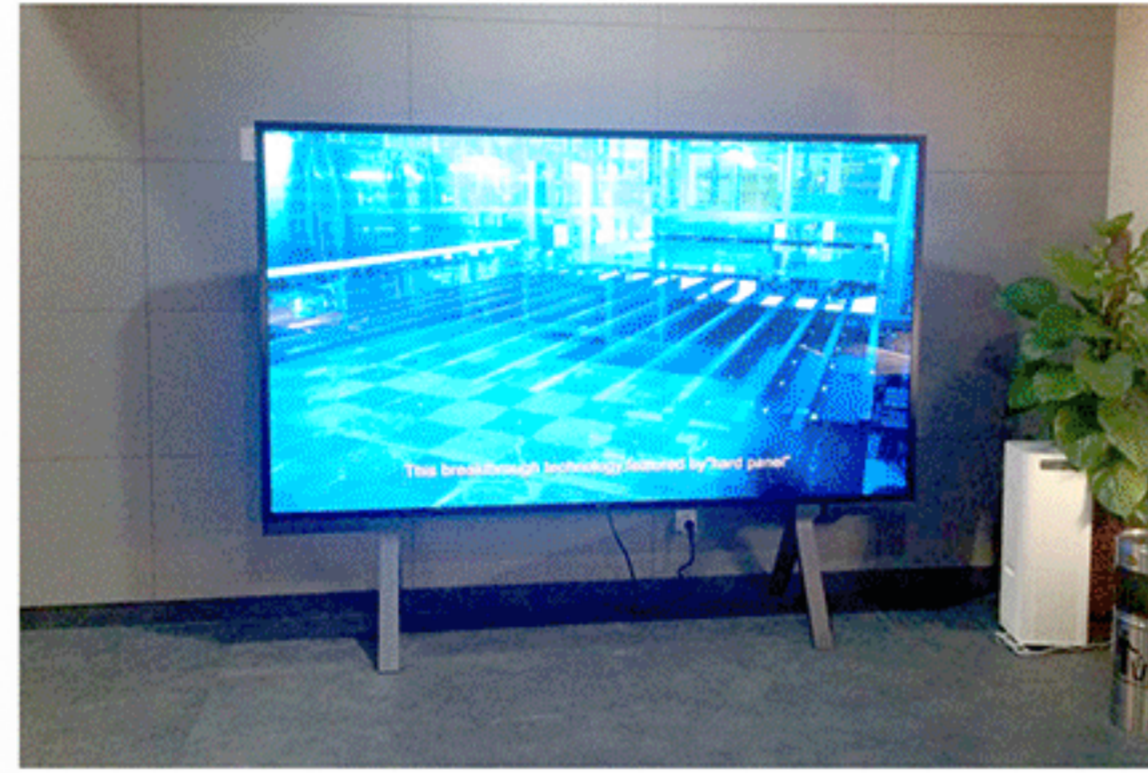
产品型号	Product size	SM22B100	SM32B100	SM42B100	SM47B100	SM55B100	SM65B100	
液晶面板 LCD panel	最大分辨率	Max. resolution	1920x1080	1366x768	1920x1080	1920x1080	1920x1080	
	可视角度	Viewing angle	170° (水平) / 160° (垂直)	178° (水平) / 178° (垂直)	(horizontal) / (vertical)			
	最大亮度 (cd/m ²)	Max. brightness	250	350	360	360	360	360
	最高对比度	Max. contrast	1000:1	1200:1	1400:1	1400:1	1400:1	4000:1
	响应时间 (ms)	Response time	5	6	8	8	8	8
	色彩 (M)	Color	16.7	16.7	16.7	16.7	16.7	16.7
色域 (NTSC)	Color gamut	72%	68%	68%	68%	68%	72%	
输入端口 Input ports	HDMI	1 (1080p/60Hz 以下兼容) (compatible when below 1080p/60Hz)						
	VGA	1 (1080p/60Hz 以下兼容) (compatible when below 1080p/60Hz)						
	YPBPR (BNC)	-	1	1	1	1	1	
	S-VIDEO (BNC)	-	1	1	1	1	1	
	AV (BNC)	1	4	4	4	4	4	
	AV (RCA)	1	-	-	-	-	-	
	DVI	-	1 (1080p/60Hz 以下兼容) (compatible when below 1080p/60Hz)					
	USB	-	2 (支持多媒体播放及软件升级) (supporting multimedia playback and software upgrade)					
	PC AUDIO	1 (3.5mm 标准音频) (3.5mm standard audio)						
	AUDIO (RCA)	-	1	1	1	1	1	
输出端口 Output ports	RS232	1 (选配) (optional)	1 (选配) (optional)	1 (选配) (optional)	1 (选配) (optional)	1 (选配) (optional)	1 (选配) (optional)	
	AV (BNC)	1	1	1	1	1	1	
	AUDIO (RCA)	-	1	1	1	1	1	
包装规格 Package dimension	RS232	1 (选配) (optional)	1 (选配) (optional)	1 (选配) (optional)	1 (选配) (optional)	1 (选配) (optional)	1 (选配) (optional)	
	裸机尺寸 (WxHxD)(mm)	Bare machine dimension	530x321x48	777x471x61	1009x602x62	1118x663x71	1289x760x62	1541x911x73
	包装尺寸 (WxHxD)(mm)	Package dimension	630x430x115	900x595x163	1190x785x183	1261x802x183	1458x924x193	1732x1192x262
	净重 (kg)	Net weight	5.8	12.0	21.1	24.7	34.0	67.5
功耗 Power consumption	毛重 (kg)	Gross weight	7.3	14.5	24.0	28.3	38.0	71.0
	功耗 (W)	Power consumption	≤ 35	≤ 75	≤ 140	≤ 160	≤ 190	≤ 280
	待机功耗 (W)	Standby power consumption	≤ 1	≤ 1	≤ 1	≤ 1	≤ 1	≤ 1
工作电压	Operating voltage	100V~240VAC 60/50Hz						

项目案例

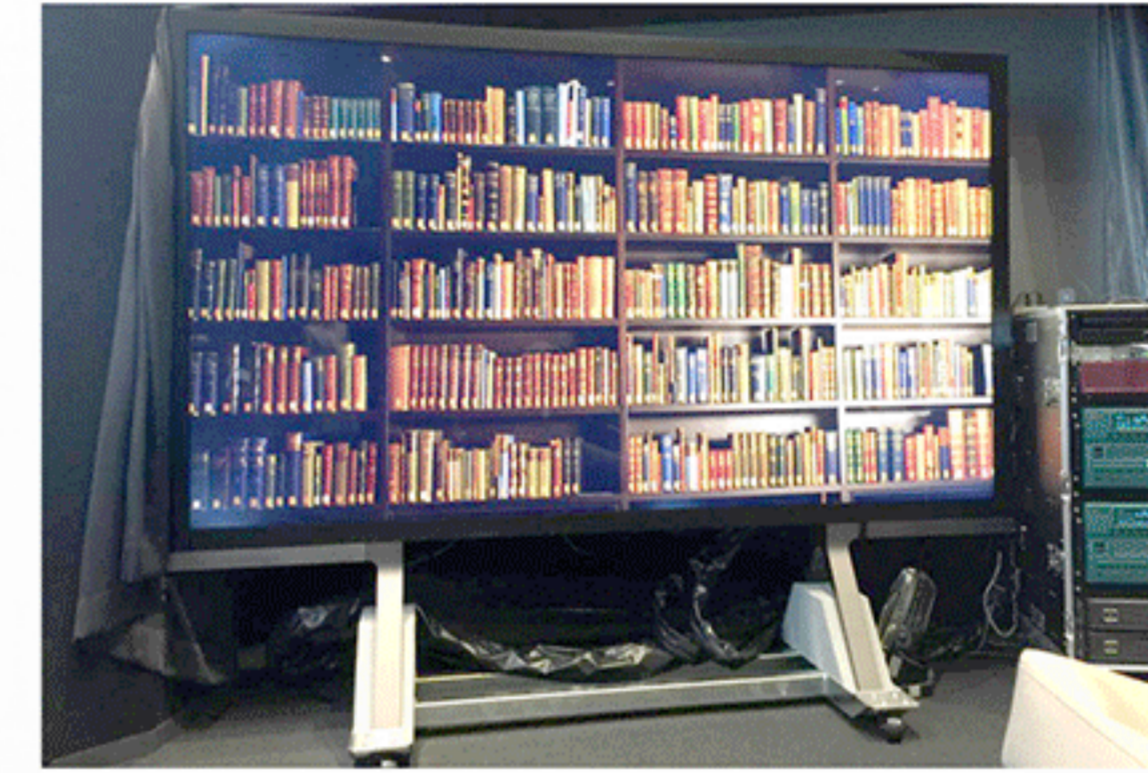
PROJECT CASE



中国科学技术馆
China Science and Technology Museum
110寸8K超高清显示终端
110 inch 8K Intelligent Display Terminal



中国税务博物馆
China Taxation Museum
110寸4K超高清显示终端
110 inch 4K Intelligent Display Terminal



日本 NHK 多媒体影院
NHK multimedia theater in Japan
110寸8K超高清显示终端
110 inch 8K Intelligent Display Terminal



某地金融国际中心
Financial International Center
84寸一体机
84 inch IR IWB



某地区国税局
Local Taxation Bureau
110寸4K超高清显示终端
110 inch 4K Intelligent Display Terminal



某地区司法局
Judicial Bureau of a region
110寸4K超高清显示终端
110 inch 4K Intelligent Display Terminal



国家电网仿真中心
State Grid Simulation Center
110寸4K超高清显示终端
110 inch 4K Intelligent Display Terminal



某地大厦会议室
A building, conference room
110寸4K超高清显示终端
110 inch 4K Intelligent Display Terminal

项目案例 PROJECT CASE



某地区人民政府
The people's Government of a region
3x3 55寸拼接
3x3 55 inch video wall



中国科学技术馆
China Science and Technology Museum
5x9 55寸拼接
5x9 55 inch video wall



某地区消防支队
Fire brigade in a district
3x3 55寸透明拼接
3x3 55 inch transparent video wall



某地工厂
A factory somewhere
4x7 55寸拼接
4x7 55 inch video wall



某地区金融大厦
Financial building of a region
3x3x3 55寸环形拼接
3x3x3 55 inch ring video wall



某地区招投标中心
Judicial Bureau of a region
3x10 46寸拼接
3x10 46 inch video wall



某央企大厦会议室
Conference room of a central enterprise building
2x6 55寸拼接
2x6 55 inch video wall

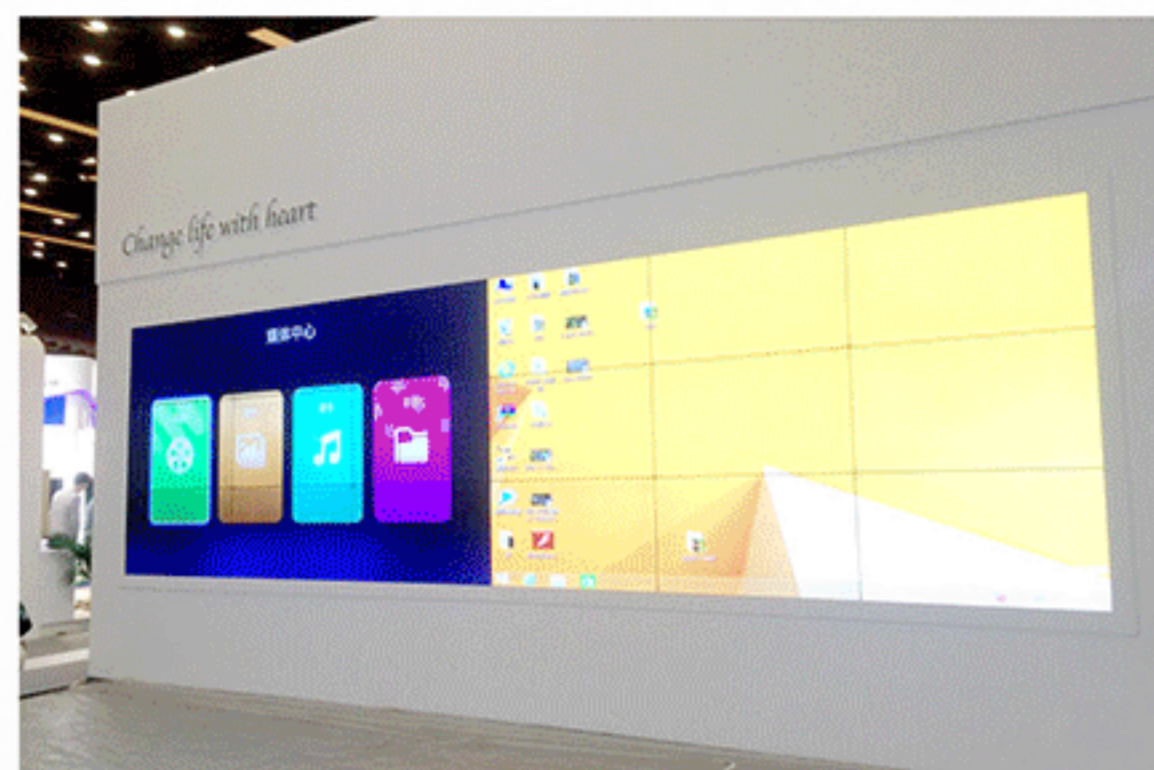


某跨境电商平台
A building, conference room
4x4 55寸拼接
4x4 55 inch video wall

项目案例 PROJECT CASE



某地区银行
A regional bank
3x3 55寸拼接
3x3 55 inch video wall



国家会议中心
National Conference Center
3x6 55寸拼接
3x6 55 inch video wall



奥林匹克管委会
Olympic Committee
3x7 55寸拼接
3x7 55 inch video wall



某地区政府机关
Government agencies in a region
4x5 55寸拼接
4x5 55 inch video wall



某地区银行会议室
People's court in a region
2x4 55寸拼接
2x4 55 inch video wall



某银行海外项目
Overseas project of a bank
2x2 55寸拼接
2x2 55 inch video wall



某地区生物天然气厂
Biological gas plant in a region
3x10 55寸拼接
3x10 55 inch video wall



某地区工厂监控室
Factory monitoring room in a region
3x9 55寸拼接
3x9 55 inch video wall

项目案例 PROJECT CASE



某地区展厅
Exhibition hall somewhere
1x28 55寸拼接
1x28 55 inch video wall



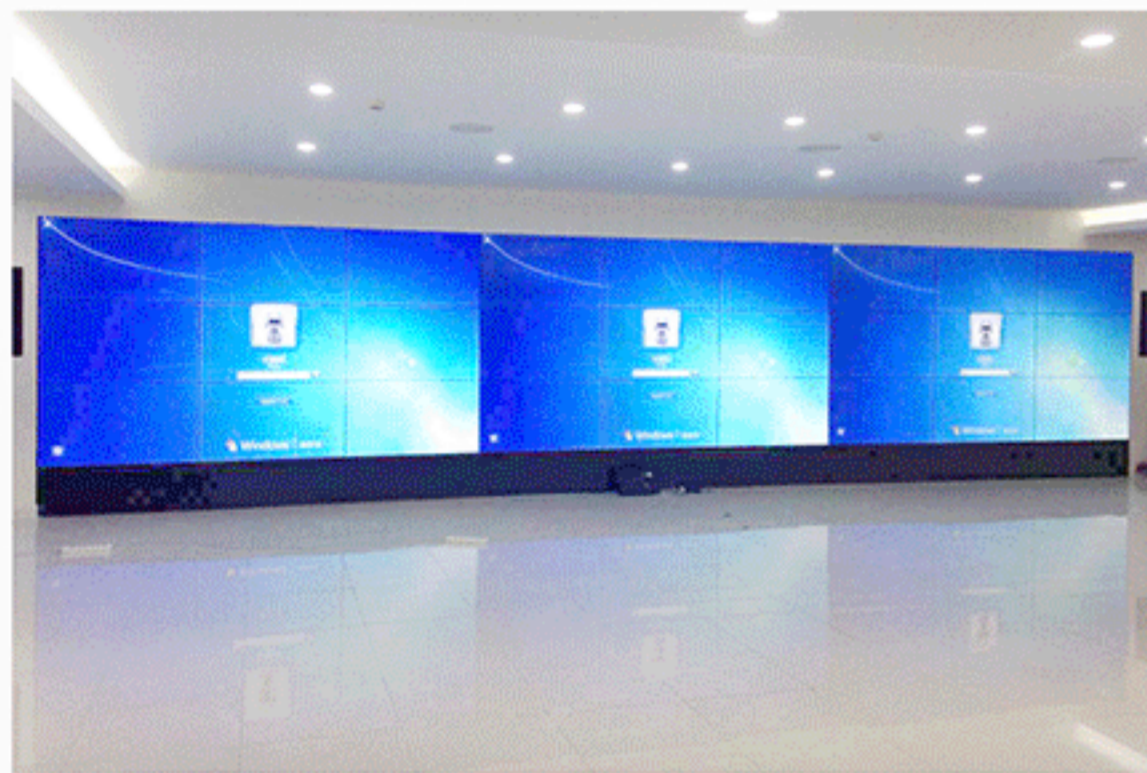
某地区刑侦支队
Criminal Investigation Detachment in a region
3x12 46寸拼接
3x12 46 inch video wall



家居展示
Home display
iGallery 数字艺术馆
iGallery digital art gallery



餐厅展示
Restaurant display
iGallery 数字艺术馆
iGallery digital art gallery



某地区人防
Civil air defense in a certain area
3x9 55寸拼接
3x9 55 inch video wall



某地区展厅
Exhibition hall somewhere
55寸透明屏
55 inch transparent screen



展厅展示
Exhibition hall
iGallery 数字艺术馆
iGallery digital art gallery



咖啡厅展示
Coffee shop display
iGallery 数字艺术馆
iGallery digital art gallery